

Pennsylvania Insert Corp
 PO Box 199
 Spring City PA 19475
 tel: 610-948-9688
 fax: 610-948-4975

email: sales@pennsylvaniainsert.com
 web: www.pennsylvaniainsert.com

Approved/Notes

Designed to withstand H-20 wheel loading, suitable for use in off-street locations where not subject to high density traffic.

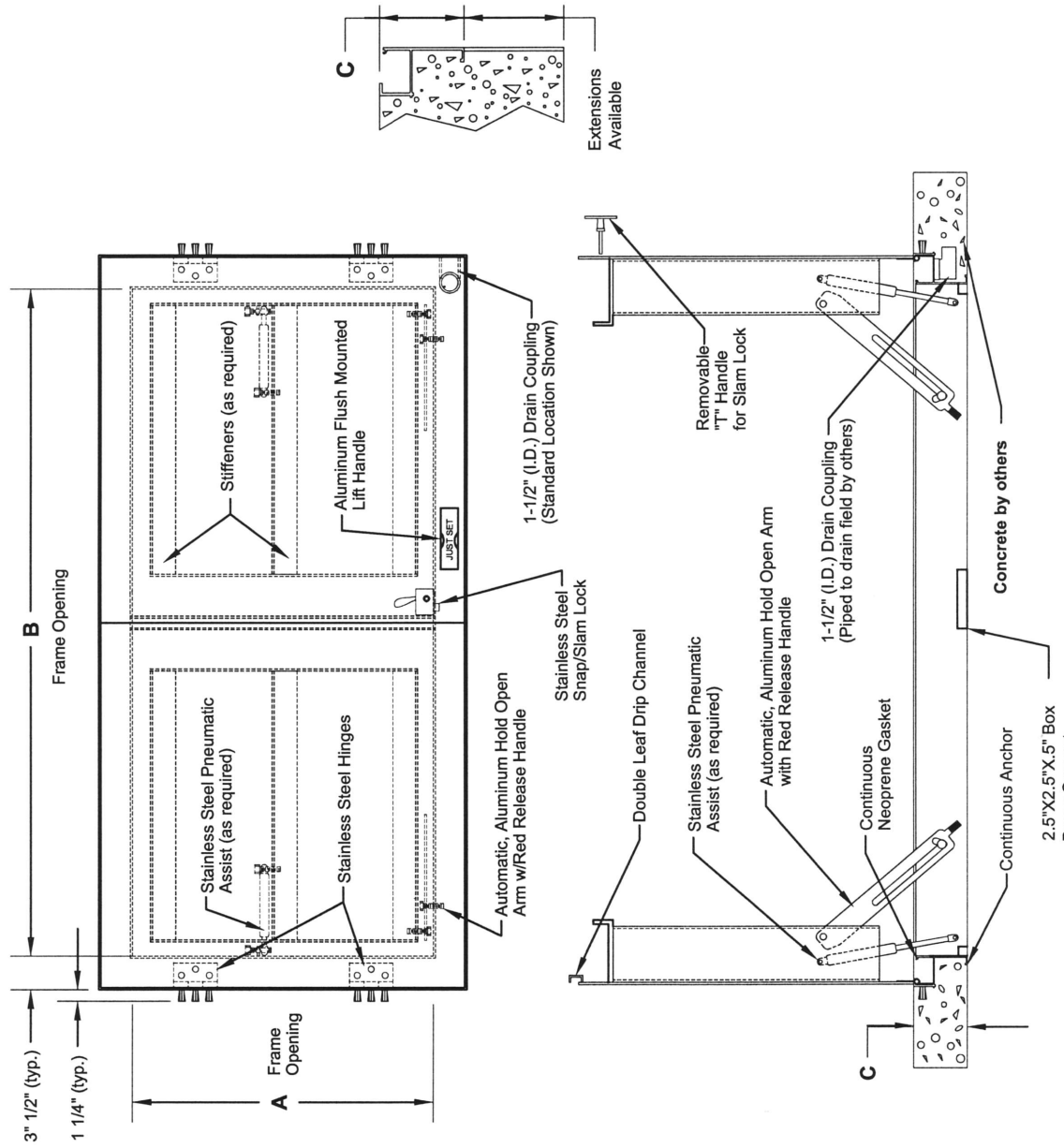
Customer _____
 Project _____
 Job# _____
 Ship Date _____

PA Insert Quote/Order# _____
 Page _____ of _____

Fax to: _____
 Fax# _____
 From _____
 Date _____

"Just Set" ALUMINUM DOOR, HEAVY DUTY, DOUBLE LEAF - TROUGH FRAME

- 1/4" Diamond Plate Lid Reinforced for HS-20 Wheel Load (w/out Impact for Incidental Traffic Only)
- 6.75" Drain Trough Frame with Gasket
- Protective Barrier where Concrete meets Aluminum
- Continuous Anchor to Lock Frame into Concrete
- Stainless Steel Spring or Pneumatic Assist (as required)
- Stainless Steel Hinges
- Stainless Steel Hardware
- Type 316 Stainless Steel Snap Lock
- 1-1/2" (I.D.) Drain Coupling
- Automatic Hold Open Arm with Red Release Handle
- Flush Mounted Lift Handle



STANDARD DIMENSIONS				
QTY	A	B	C	STOCK#
	30"	48"	6.75"	*ATH3048D
	36"	48"	6.75"	*ATH3648D
	48"	48"	6.75"	*ATH4848D
	48"	72"	6.75"	*ATH4872D
	60"	60"	8.75"	*ATH6060D

An asterisk (*) next to stock number = stainless steel compression spring or pneumatic assist is standard.
 (custom door sizes available upon request)