

Approved/Notes

Designed to withstand H-20 wheel loading, suitable for use in off-street locations where not subject to high density traffic.

Fax to: _____

Fax# _____

From _____

Customer _____

Project _____

Job# _____

Ship Date _____

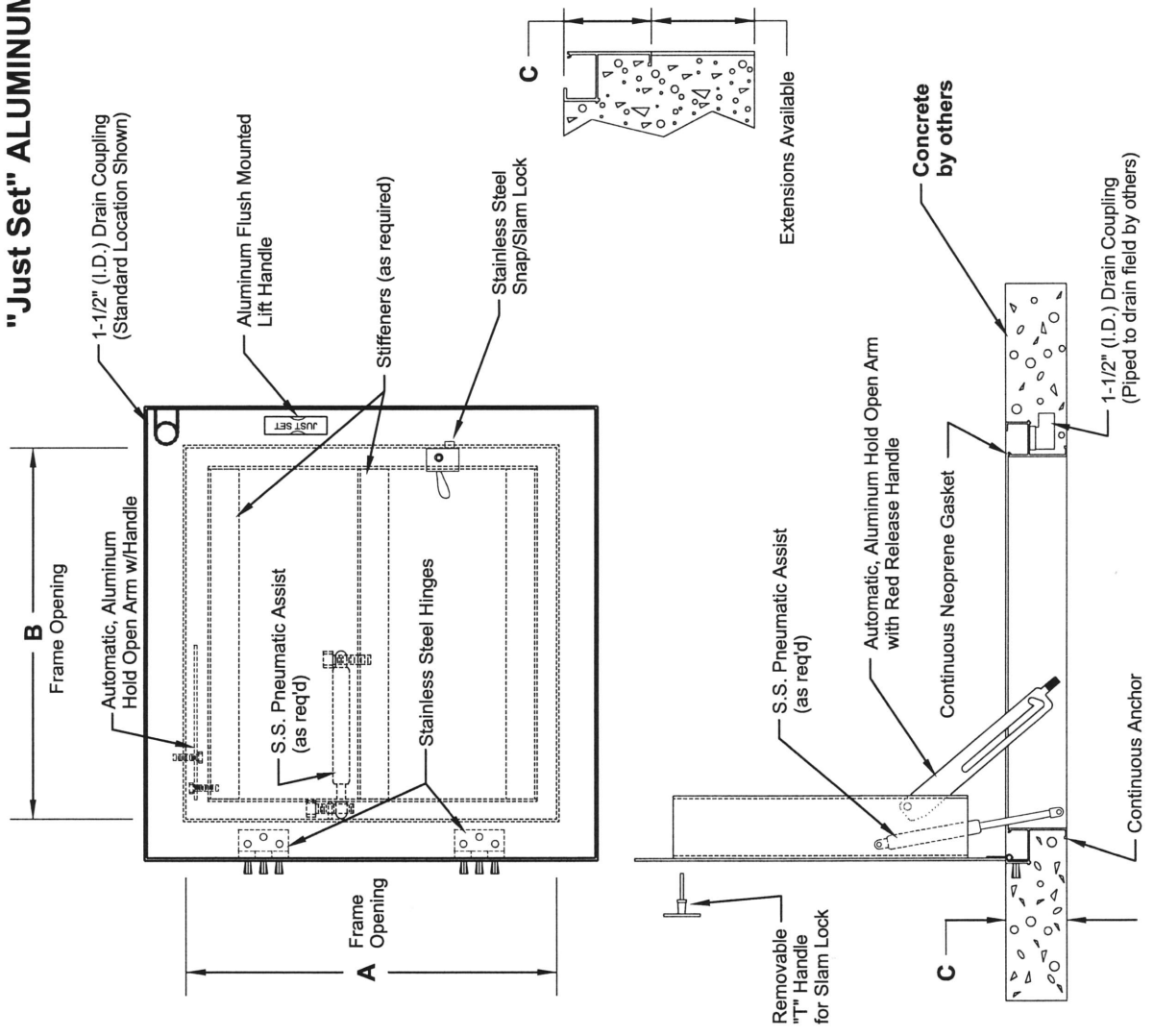
Date _____

PA Insert Quote/Order# _____

Page _____ of _____

"Just Set" ALUMINUM DOOR, HEAVY DUTY, SINGLE LEAF - TROUGH FRAME

- 1/4" Diamond Plate Lid Reinforced for HS-20 Wheel Loading (**without impact - for incidental traffic only**)
- 6" Drain Trough Frame with Gasket
- Protective Barrier where Concrete meets Aluminum
- Continuous Anchor to Lock Frame into Concrete
- Stainless Steel Pneumatic Assist (as required)
- Stainless Steel (Butt Style) Hinges & Hinge Pin
- Stainless Steel Hardware
- Type 316 Stainless Steel Snap Lock
- 1-1/2" (I.D.) Drain Coupling
- Automatic Hold Open Arm with Red Release Handle
- Aluminum Flush Mounted Lift Handle



STANDARD DIMENSIONS				
QTY	A	B	C	STOCK#
	24"	24"	6.00"	ATH2424S
	30"	30"	6.00"	*ATH3030S
	36"	30"	6.00"	*ATH3630S
	36"	36"	6.00"	*ATH3636S
	42"	42"	6.00"	*ATH4242S
	48"	36"	6.00"	*ATH4836S
	48"	48"	6.75"	*ATH4848S

An asterisk (*) next to stock number = stainless steel pneumatic assist is standard.

Installation shall be in accordance with manufacturer's instructions

NO SCALE