

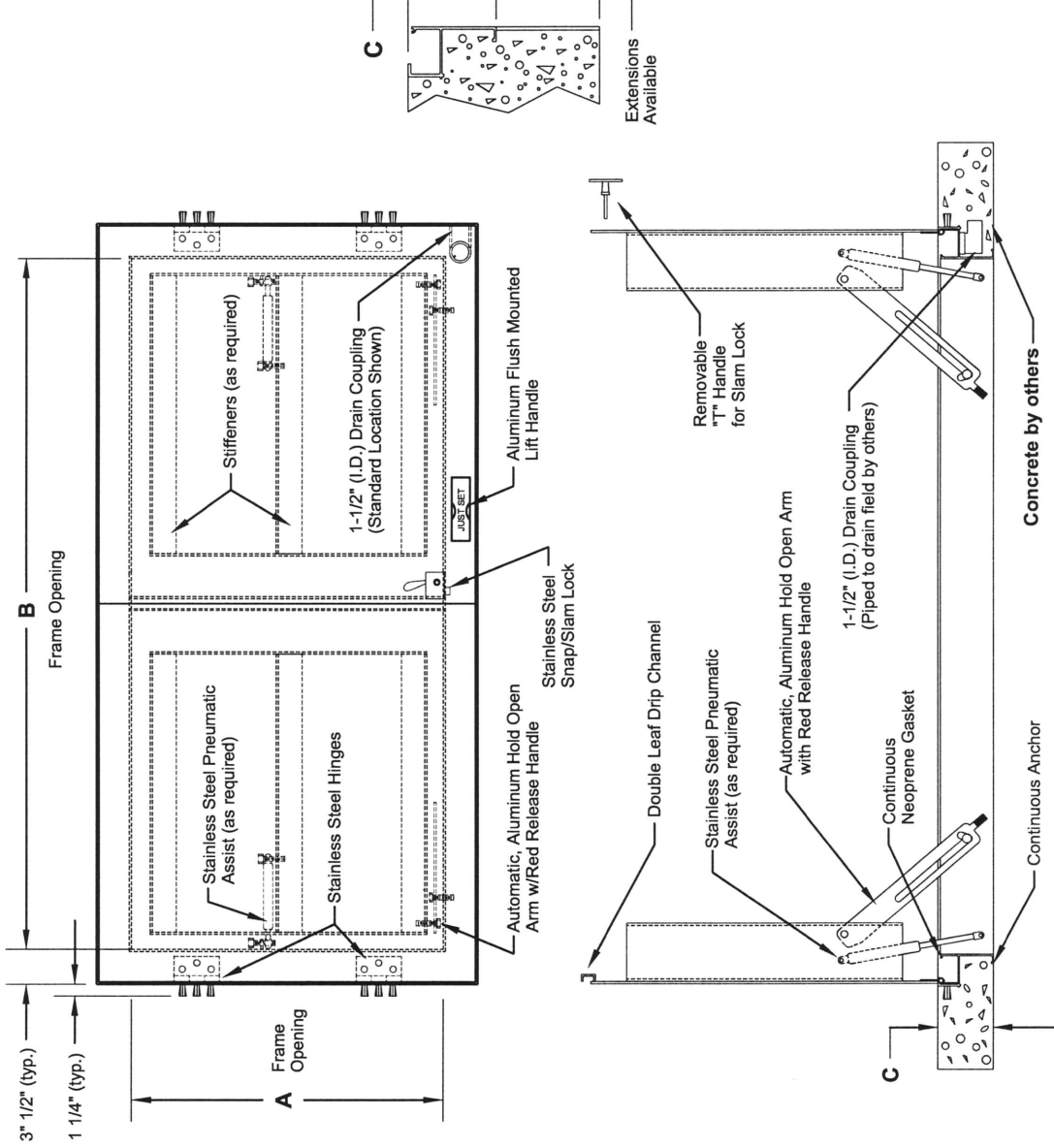
PA Insert Corp
 Spring City PA 19475
 tel: 610-948-9688
 fax: 610-948-4975
 email: sales@pennsylvaniainsert.com
 web: www.pennsylvaniainsert.com

Approved/Notes

Fax to:	Customer
Fax#	Project
From	Job#
Date	PA Insert Quote/Order#
	Ship Date
	Page _____ of _____

"Just Set" ALUMINUM DOOR, STANDARD DUTY, DOUBLE LEAF - TROUGH FRAME

- 1/4" Diamond Plate Lid Reinforced for 300 lb/ft² load
- 6" Drain Trough Frame with Gasket
- Protective Barrier where Concrete meets Aluminum
- Continuous Anchor to Lock Frame into Concrete
- Stainless Steel Pneumatic Assist (as req'd)
- Stainless Steel Hinges
- Stainless Steel Hardware
- Type 316 Stainless Steel Snap Lock
- 1-1/2" (I.D.) Drain Coupling
- Automatic Hold Open Arm with Red Release Handle
- Flush Mounted Lift Handle



STANDARD DIMENSIONS				
QTY	A	B	C	STOCK#
	30"	48"	6.00"	ATS3048D
	36	48"	6.00"	ATS3648D
	48	48"	6.00"	*ATS4848D
	48"	72"	6.00"	*ATS4872D
	60"	60"	6.00"	*ATS6060D

An asterisk (*) next to stock number = stainless steel pneumatic assist is standard.

**Installation shall be in accordance with manufacturer's instructions

NO SCALE

12/08