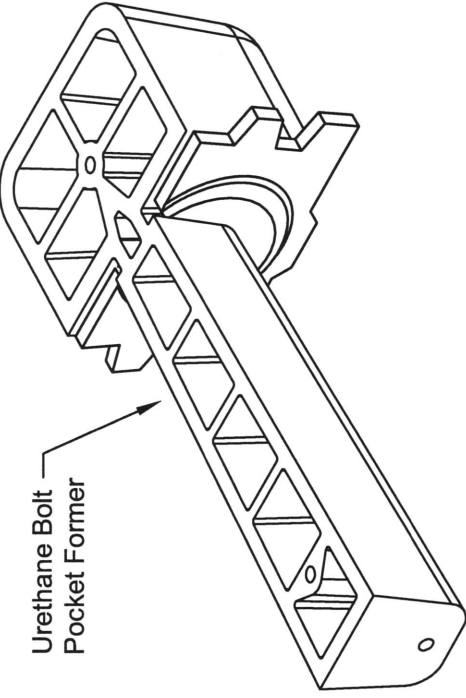


**PA Insert Corp**  
 PO Box 199  
 Spring City PA 19475  
 tel: 610-948-9688  
 fax: 610-948-4975  
 email: sales@pennsylvaniainsert.com  
 web: www.pennsylvaniainsert.com

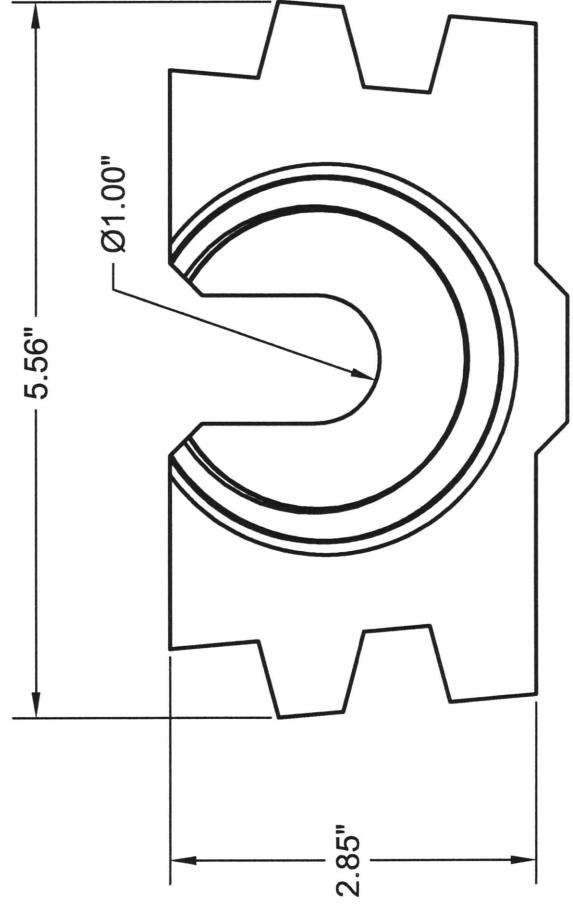
Approved/Notes

Fax to:	Customer	Page ___ of ___
Fax#	Project	
From	Job#	Ship Date
Date	PA Insert Quote/Order#	



### BOLT POCKET PLATE (use with bolt pocket former)

- \*1/4" Galvanized Steel Plate Standard, distributes bolt load
- Teeth anchor plate securely in concrete
- Pressed center keeps bolt in position
- \*\*Fits securely into reusable bolt pocket former



\*Plain Steel or Stainless Steel Optional

\*\*Urethane Bolt Pocket Former sold separately (part number 4023)