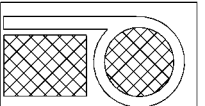


Fax to:	Customer
Fax#	Project
From	Job#
Date	PA Insert Quote/Order#
	Page ____ of ____

Approved/Notes

PA Insert Corp
 490 FIRST AVENUE
 ROYERSFORD, PA 19468
 tel: 610-948-9688
 fax: 610-948-4975

email: sales@pennsylvaniainsert.com
 web: www.paininsert.com

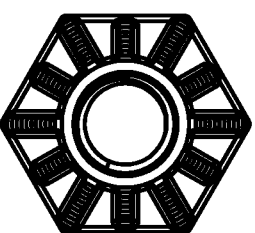
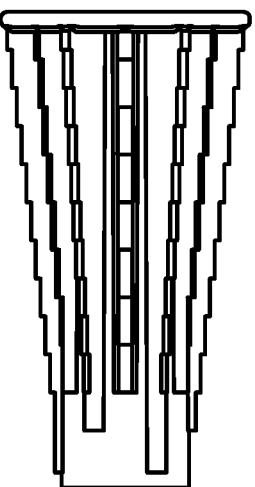
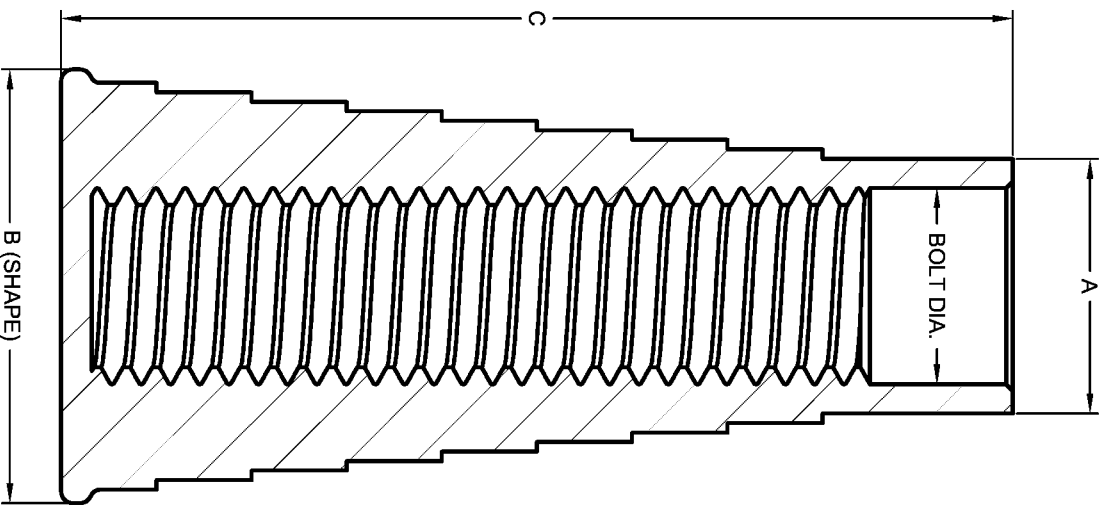


PLASTIC THREADED INSERT

- FOR USE WITH PA INSERT TAP-ONS AND STICK-ONS
 - STEPS IN RIBS INCREASE INSERT SURFACE CONTACT

MODEL	BOLT DIA.	A	B	C	WORKING LOAD (LBS.)	ULTIMATE STRENGTH (LBS.)	CONCRETE PSI
IN-025	1/4"	0.35"	0.75" (OCT)	1-1/4"	200	770	4000
IN-038	3/8"	0.50"	0.86" (OCT)	1-1/2"	770	3076	5000
IN-050S	1/2"	0.67"	1.00" (HEX)	1-3/4"	1392	5567	6600
IN-050	1/2"	0.67"	1.14" (HEX)	2-1/2"	1763	7050	4100
IN-063	5/8"	0.81"	1.30" (HEX)	3"	2916	11664	6065
IN-075	3/4"	0.94"	1.38" (HEX)	3-1/4"	2545	10180	4751
IN-100	1"	1.20"	1.83" (CIRC)	3-3/4"	3740	18700	3076

NOTE: - USE NATIONAL COARSE GRADE 8 HIGH STRENGTH THREADED BOLTS
 - THREADS MUST BE FULLY ENGAGED TO ACHIEVE LOADS LISTED ABOVE
 - INSERT MUST NOT BE USED IN CONDITIONS THAT EXCEED 185 °F
 - CONCRETE PSI WILL ALTER RESULTS SHOWN



EXAMPLE OF HEXAGONAL BASE

NO SCALE

06/09/04