

Fax to:

Customer

Approved/Notes

Pennsylvania Insert Corp

Fax#

Project

PO Box 199
Spring City PA 19475
tel: 610-948-9688

From

Job#

Ship Date

fax: 610-948-4975

Date

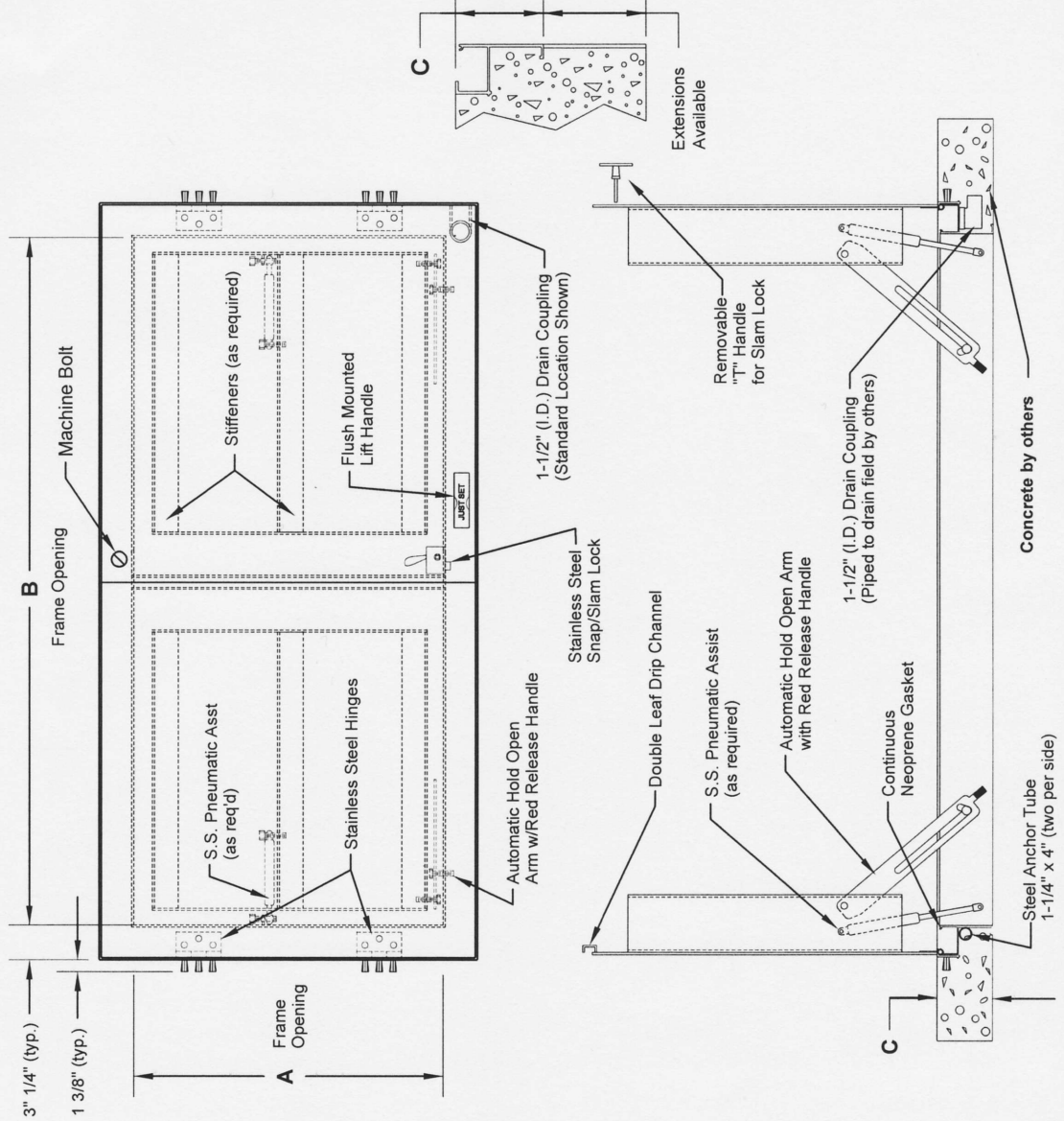
PA Insert Quote/Order#

Page _____ of _____

email: sales@pennsylvaniainsert.com
web: www.pennsylvaniainsert.com

"Just Set" STEEL DOOR, HEAVY DUTY, DOUBLE LEAF - TROUGH FRAME

- 3/8" Diamond Plate Lid Reinforced for HS-20 Wheel Loading plus an Additional 30% Live Load Impact
- Drain Trough Frame with Gasket
- Welded Anchors Lock Frame into Concrete
- Stainless Steel Pneumatic Assist (as req'd)
- Stainless Steel Hinges
- Stainless Steel Hardware
- 316 Stainless Steel Snap Lock, Machine Bolt Lock
- 1-1/2" (I.D.) Drain Coupling
- Automatic Hold Open Arm with Red Release Handle
- Flush Mounted Lift Handle
- Red Primer Finish Standard



STANDARD DIMENSIONS				
QTY	A	B	C	STOCK#
	30"	48"	7-5/8"	*STH3048D
	36"	48"	7-5/8"	*STH3648D
	42"	42"	9-5/8"	*STH4242D
	48"	48"	9-5/8"	*STH4848D
	48"	72"	9-5/8"	*STH4872D
	60"	60"	9-5/8"	*STH6060D

An asterisk (*) next to stock number = stainless steel pneumatic assists standard.