

Attention: _____

From: _____

Fax #: _____

PA Insert Quote or Job Number: _____

Customer: _____

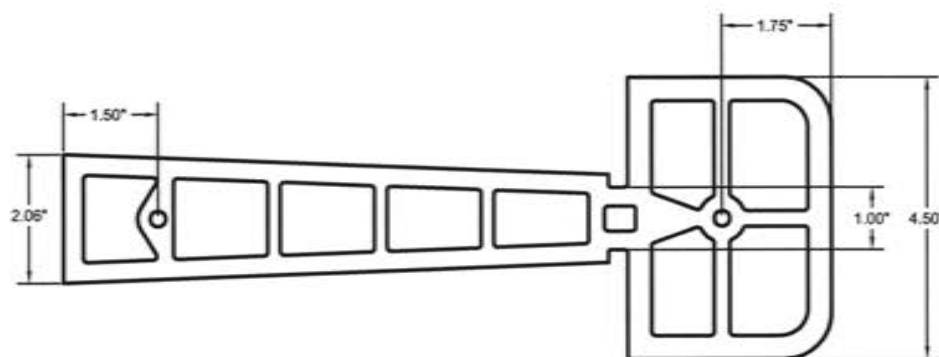
Project: _____

Job Number: _____

Ship Date: ____ / ____ / ____

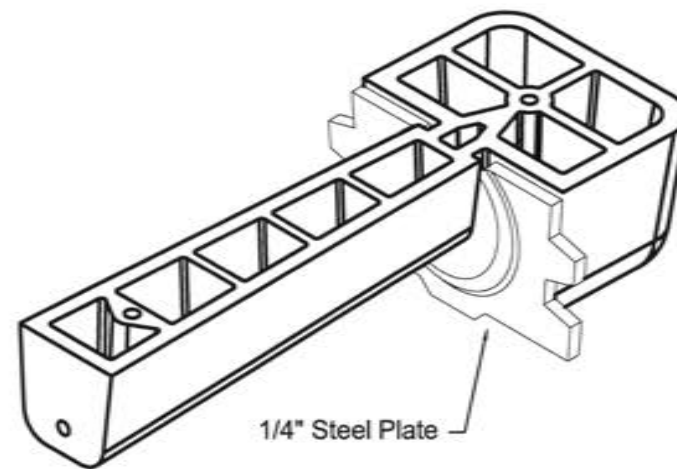
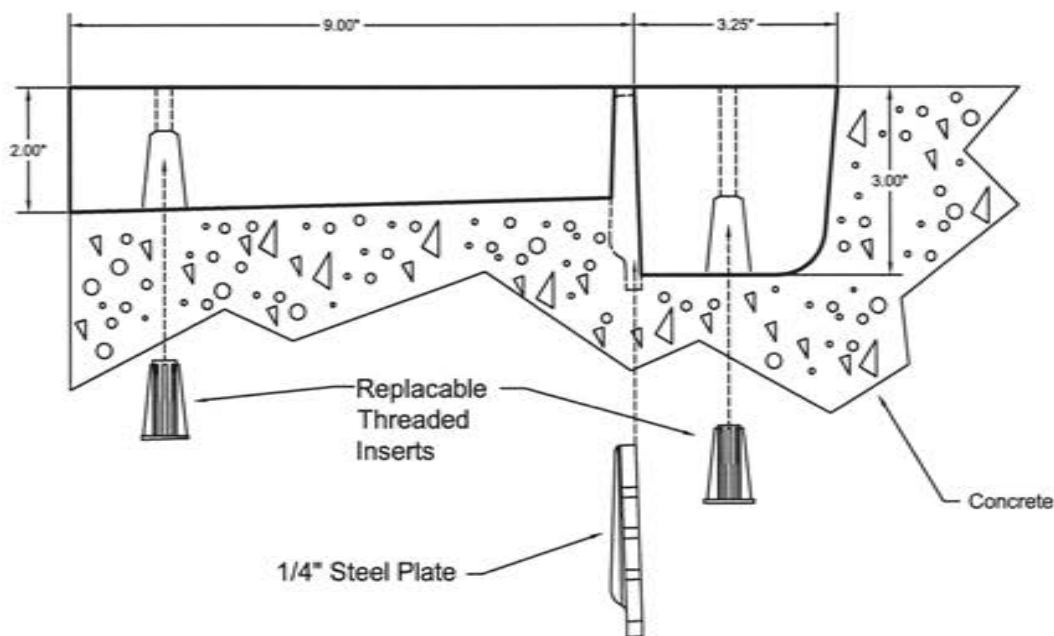
Date: ____ / ____ / ____

Page ____ of ____



BOLT POCKET FORMER (for up to 1" bolt)

- Made from durable Urethane for reusability
- Ribbed construction increases strength
- *Replacable 1/4" Threaded Inserts
- **1/4" Galvanized Steel Plate Standard
- Available with magnets to attach to form



*Threaded Inserts sold separately (Part Number 1200)

**Steel Plate stays in concrete, sold separately (Part Number 4024)

06/03/04

Attention: _____

From: _____

Fax #: _____

PA Insert Quote or Job Number: _____

Customer: _____

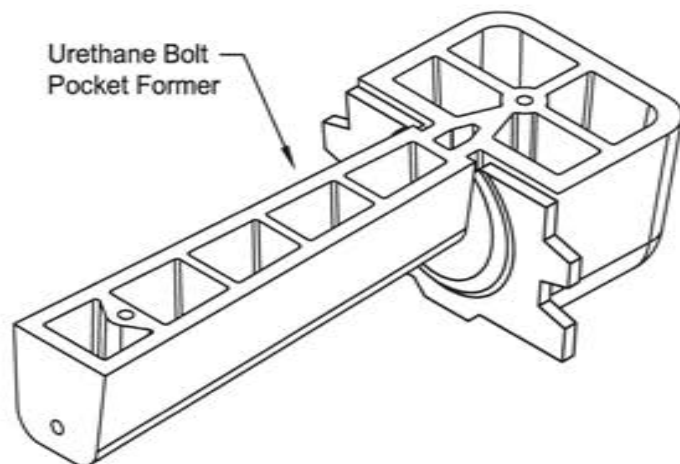
Project: _____

Job Number: _____

Ship Date: ____ / ____ / ____

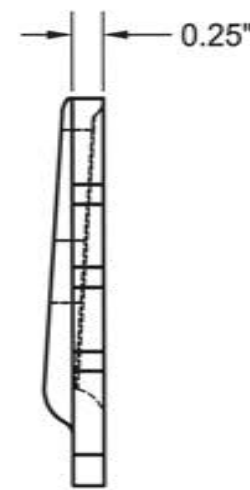
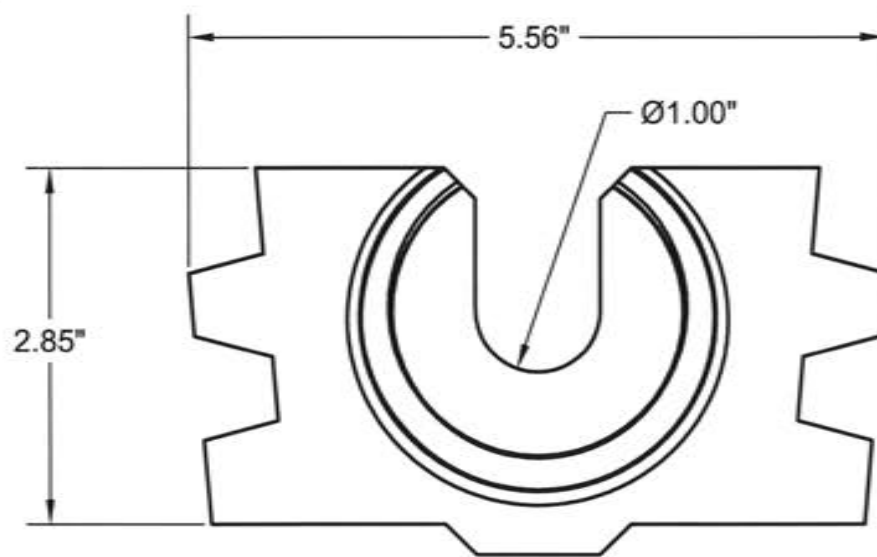
Date: ____ / ____ / ____

Page ____ of ____



BOLT POCKET PLATE (use with bolt pocket former)

- *1/4" Galvanized Steel Plate Standard, distributes bolt load
- Teeth anchor plate securely in concrete
- Pressed center keeps bolt in position
- **Fits securely into reusable bolt pocket former



*Plain Steel or Stainless Steel Optional

**Urethane Bolt Pocket Former sold separately (part number 4023)

06/03/04

Bolt Pocket Former

Installation Instructions

The simple forming solution for tying together sections of box culvert or precast walls.



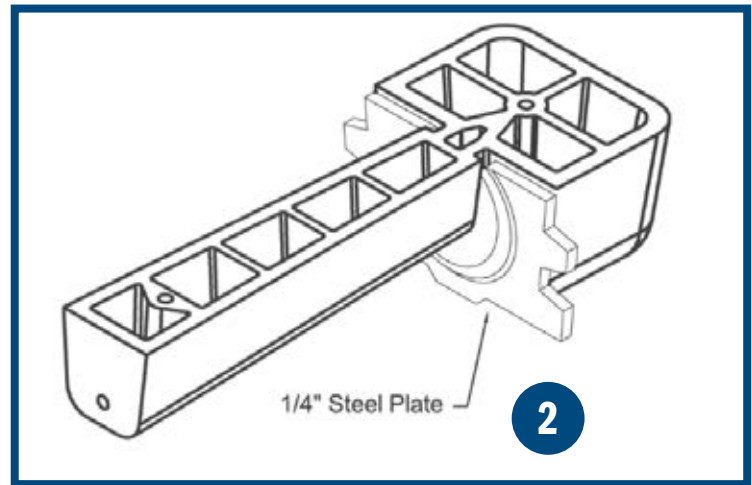
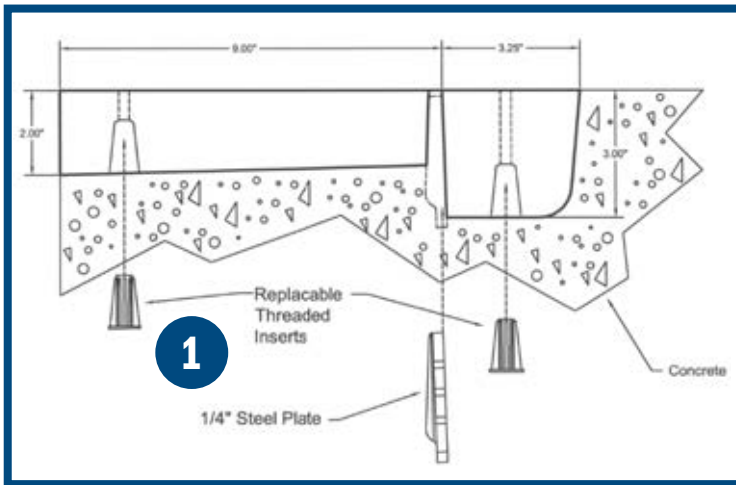
- 1 Steel Plate remains embedded in concrete to hold nut.
- 2 Attach to form using either 1/4" bolts or plastic screws. Version with magnets available.

Bolt Pocket Former - the ideal solution for tying together sections of box culvert or precast walls. This dual purpose forming device creates both a groove through the joint and a pocket for the bolt. The steel plate that remains embedded in the concrete accepts up to 1" rod. Molded out of a specially formulated urethane, our bolt pocket former will last for at least 50 pours when properly maintained.

Bolt Pocket Former

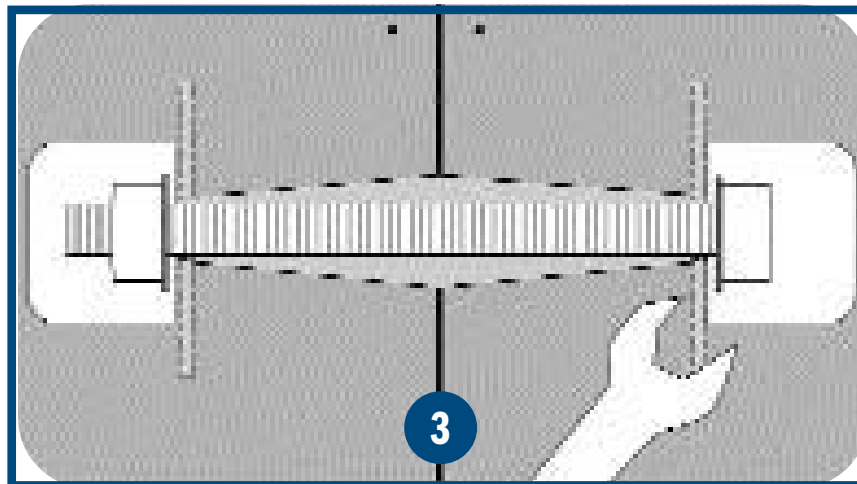
Installation Instructions

The simple forming solution for tying together sections of box culvert or precast walls.



1 Attach Bolt Pocket Former to form using either 1/4" bolts or plastic screws for non collapsing forms. The inserts are replaceable should the threads show signs of wear after numerous uses.

2 Slide steel plate onto Bolt Pocket Former. Pour.



3 After stripping form, slide Bolt Pocket Former out using pliers. Steel plate remains embedded in concrete. A groove through the joint and bolt pocket are formed. For field installation*, the steel plate accepts up to 1" rod. *We provide a field installation kit consisting of rod, 2 nuts, and 2 washers for an additional charge.