

Attention: _____

From: _____

Fax #: _____

PA Insert Quote or Job Number: _____

Customer: _____

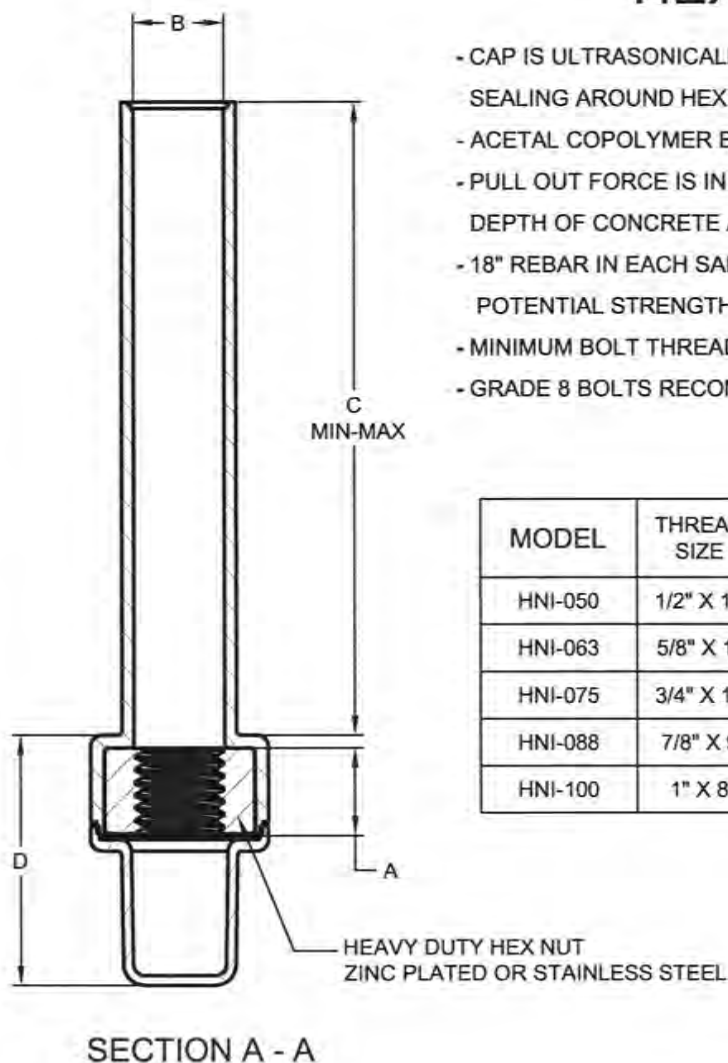
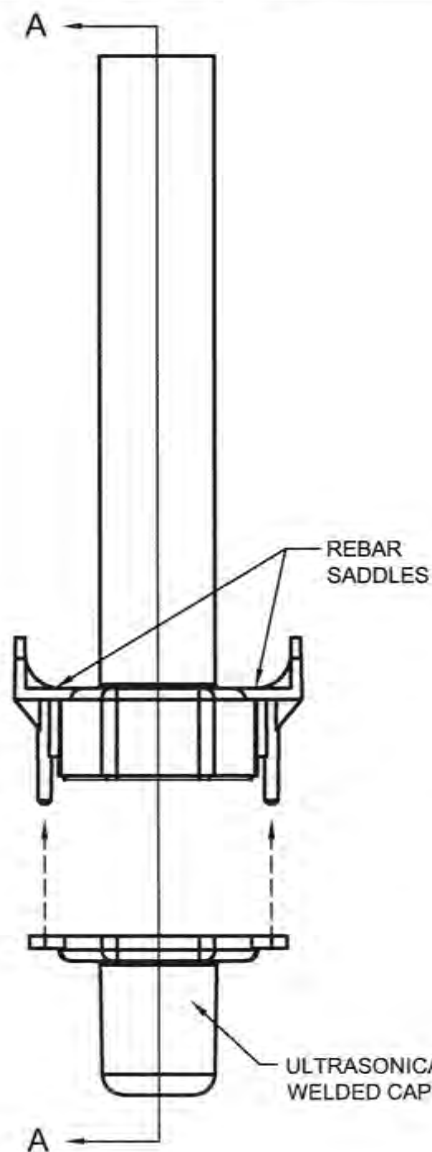
Project: _____

Job Number: _____

Ship Date: ____ / ____ / ____

Date: ____ / ____ / ____

Page ____ of ____



HEX NUT INSERT

- CAP IS ULTRASONICALLY WELDED TO MAIN PIECE PROVIDING HERMETIC SEALING AROUND HEX NUT
- ACETAL COPOLYMER BODY SERVES AS A LOCATOR FOR THE NUT
- PULL OUT FORCE IS IN LINE WITH THE BOLT HOLE, AND DEPENDENT ON DEPTH OF CONCRETE AND REBAR
- 18" REBAR IN EACH SADDLE IS RECOMMENDED TO ACHIEVE FULL POTENTIAL STRENGTH
- MINIMUM BOLT THREAD ENGAGEMENT - 6 FULL REVOLUTIONS
- GRADE 8 BOLTS RECOMMENDED

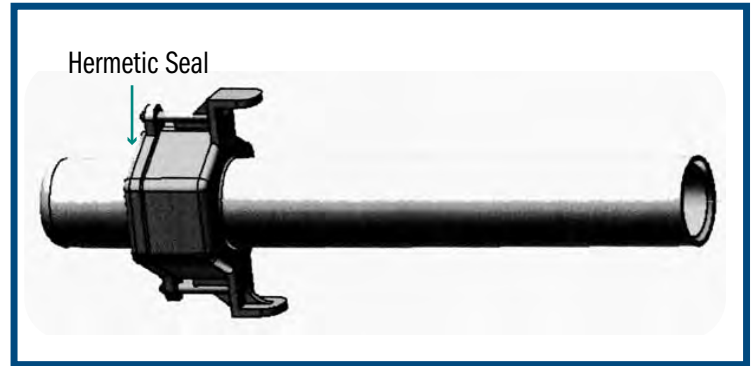
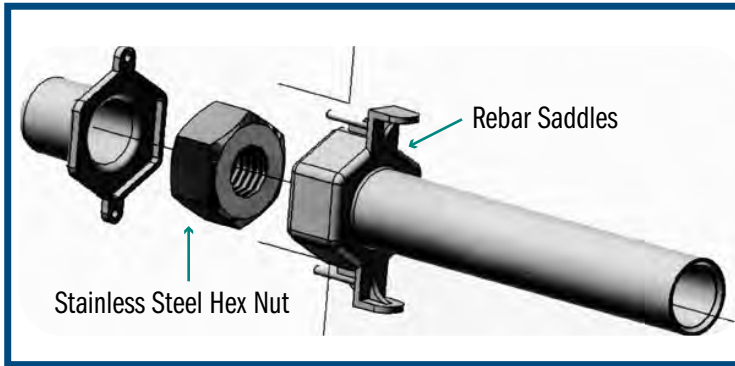
MODEL	THREAD SIZE	A (THREAD DEPTH)	B (I.D.)	C (SHEAR CONE DEPTH)	D (BOLT THREAD ENGAGEMENT)
HNI-050	1/2" X 13	31/64"	.515"	1-3/4" - 4-1/2"	1.505"
HNI-063	5/8" X 11	39/64"	.642"	1-3/4" - 4-1/2"	1.760"
HNI-075	3/4" X 10	47/64"	.770"	1-3/4" - 4-1/2"	1.995"
HNI-088	7/8" X 9	55/64"	.893"	1-3/4" - 4-1/2"	2.245"
HNI-100	1" X 8	63/64"	1.04"	1-3/4" - 4-1/2"	2.510"



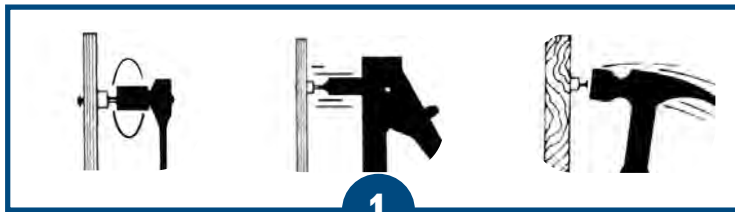
Hex Nut Metal Insert

Installation Instructions

The economical alternative to the stainless steel insert: Our **Hex Nut Insert**. Features a stainless steel hex nut encased in a hermetically sealed plastic shell. Available in the following sizes: 1/2", 5/8", 3/4", 7/8", and 1". Installs easily using our tap ons or stick ons. Suitable for a variety of applications from bolting guard rails to aligning precast walls.

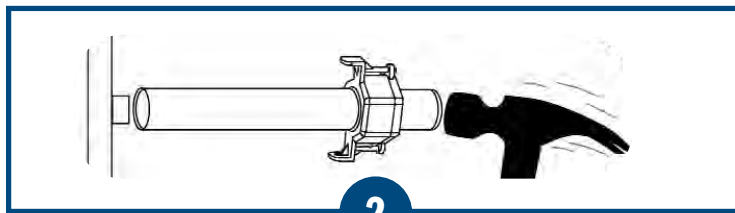


Install with Tap-Ons:



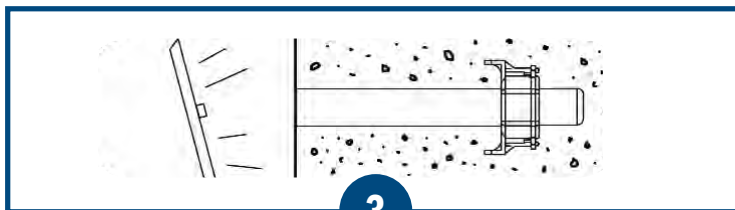
1

- 1 For installing a Hex Nut Insert with a Tap-On, it will be necessary to drill small holes in the form at the locations where inserts are desired. Measure and mark the form wherever an insert is needed and drill a 3/16" hole. Then, simply bolt, rivet, or nail the tap-on to the form.



2

- 2 Tap Hex Nut Insert gently on to the tap-on. (Never hit the Insert hard and always wear safety glasses.)



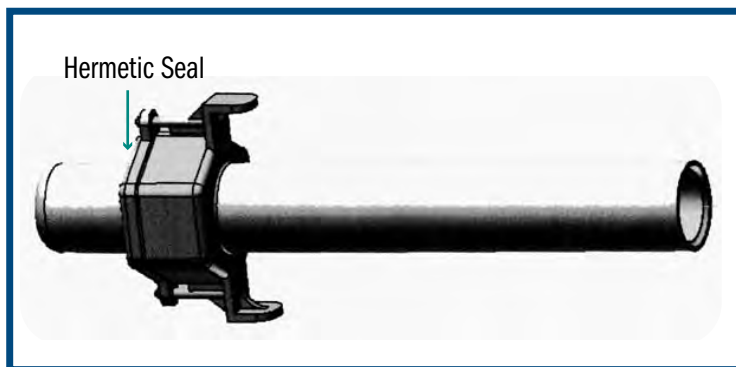
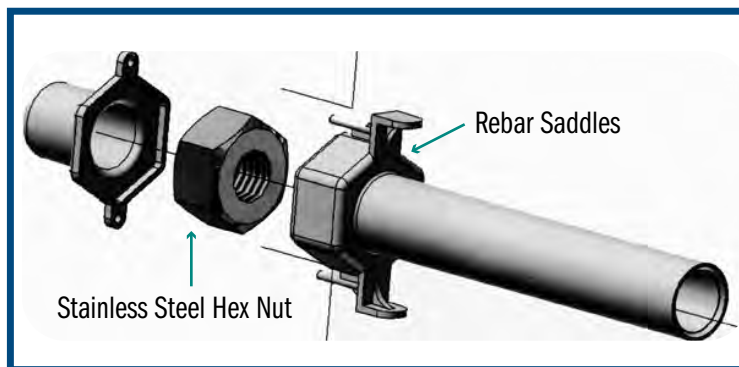
3

- 3 Tap-on will release when the form is stripped.

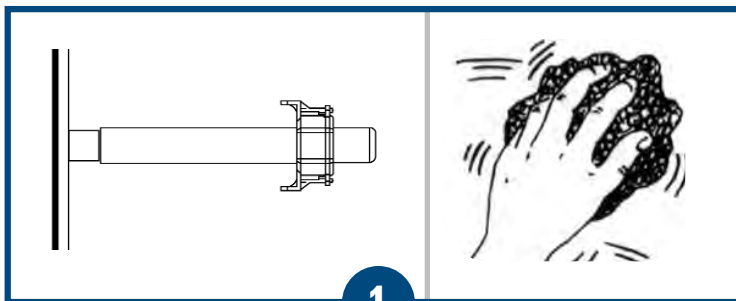
Hex Nut Metal Insert

Installation Instructions

The economical alternative to the stainless steel insert: Our **Hex Nut Insert**. Features a stainless steel hex nut encased in a hermetically sealed plastic shell. Available in the following sizes: 1/2", 5/8", 3/4", 7/8", and 1". Installs easily using our tap ons or stick ons. Suitable for a variety of applications from bolting guard rails to aligning precast walls.



Install with Stick-Ons:



- 1 For installing a Hex Nut Insert with a Stick-On, simply attach the appropriately sized Tap-On to the Hex Nut Insert. Clean the mounting surface with steel wool and alcohol.



- 2 Peel the white backing off then press the Stick-On firmly in place using the corners of the Stick-On to align for critical placement.