

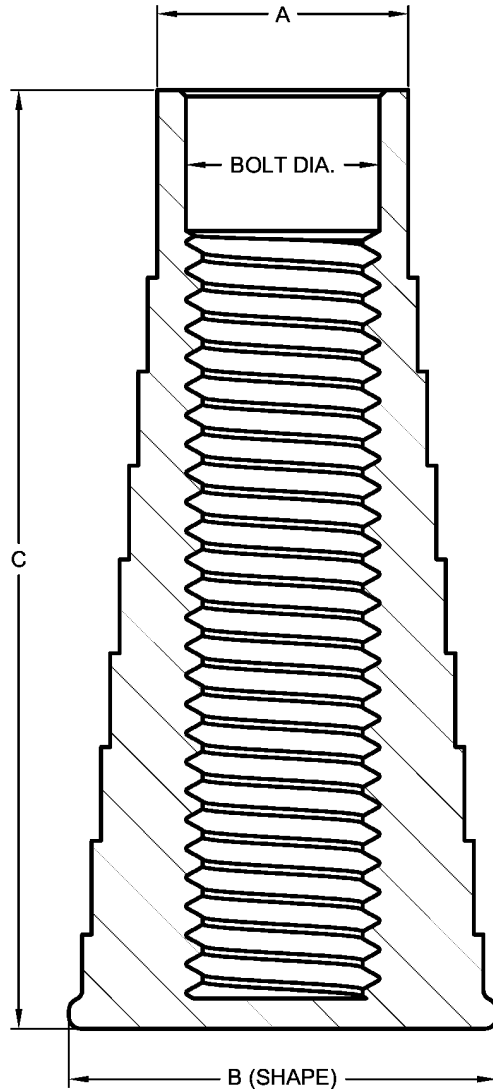
Attention: \_\_\_\_\_  
 From: \_\_\_\_\_  
 Fax #: \_\_\_\_\_  
 PA Insert Quote or Job Number: \_\_\_\_\_

Customer: \_\_\_\_\_  
 Project: \_\_\_\_\_  
 Job Number: \_\_\_\_\_  
 Ship Date: \_\_\_\_ / \_\_\_\_ / \_\_\_\_

Date: \_\_\_\_ / \_\_\_\_ / \_\_\_\_  
 Page \_\_\_\_ of \_\_\_\_

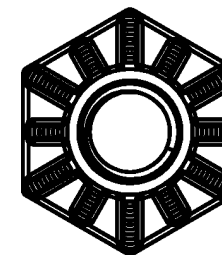
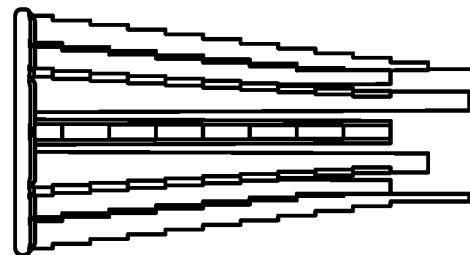
## PLASTIC THREADED INSERT

- FOR USE WITH PA INSERT TAP-ONS AND STICK-ONS
- STEPS IN RIBS INCREASE INSERT SURFACE CONTACT



MODEL	BOLT DIA.	A	B	C	WORKING LOAD (LBS.)	ULTIMATE STRENGTH (LBS.)	CONCRETE PSI
IN-025	1/4"	0.35"	0.75" (OCT)	1-1/4"	200	770	4000
IN-038	3/8"	0.50"	0.86" (OCT)	1-1/2"	770	3076	5000
IN-050S	1/2"	0.67"	1.00" (HEX)	1-3/4"	1392	5567	6600
IN-050	1/2"	0.67"	1.14" (HEX)	2-1/2"	1763	7050	4100
IN-063	5/8"	0.81"	1.30" (HEX)	3"	2916	11664	6065
IN-075	3/4"	0.94"	1.38" (HEX)	3-1/4"	2545	10180	4751
IN-100	1"	1.20"	1.83" (CIRC)	3-3/4"	3740	18700	3076

- NOTE: - USE NATIONAL COARSE GRADE 8 HIGH STRENGTH THREADED BOLTS  
 - THREADS MUST BE FULLY ENGAGED TO ACHIEVE LOADS LISTED ABOVE  
 - INSERT MUST NOT BE USED IN CONDITIONS THAT EXCEED 185 °F  
 - CONCRETE PSI WILL ALTER RESULTS SHOWN



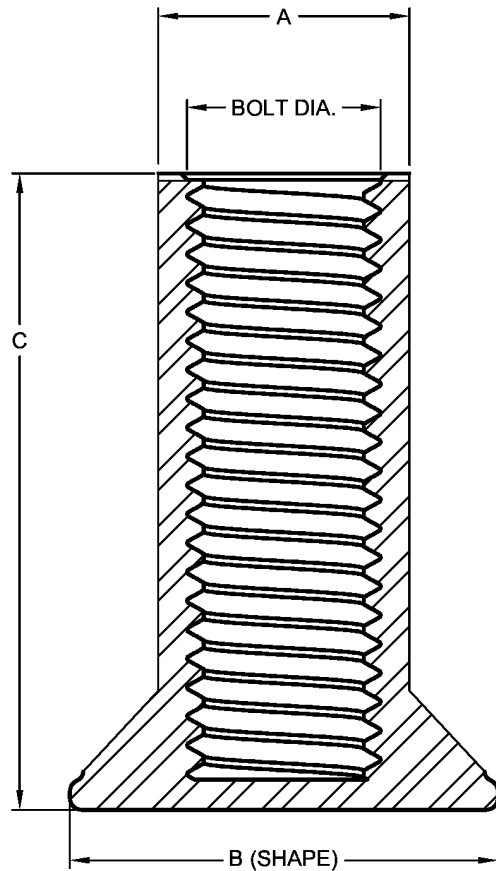
EXAMPLE OF HEXAGONAL BASE

Attention: \_\_\_\_\_  
From: \_\_\_\_\_  
Fax #: \_\_\_\_\_  
PA Insert Quote or Job Number: \_\_\_\_\_

Customer: \_\_\_\_\_  
Project: \_\_\_\_\_  
Job Number: \_\_\_\_\_  
Ship Date: \_\_\_\_ / \_\_\_\_ / \_\_\_\_

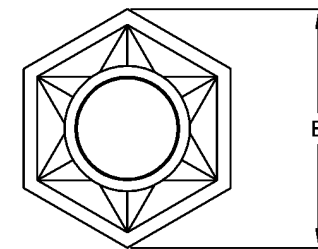
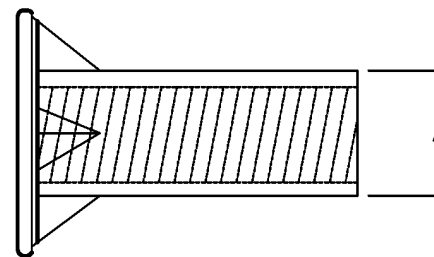
Date: \_\_\_\_ / \_\_\_\_ / \_\_\_\_  
Page \_\_\_\_ of \_\_\_\_

## ZINC THREADED INSERT



MODEL	BOLT DIA.	A	B	C	WORKING LOAD (LBS.)	ULTIMATE STRENGTH (LBS.)	PSI OF CONCRETE TESTED
MI-025	1/4"	0.38"	0.88" (HEX)	1-1/2"	811	3245	3500
MI-038	3/8"	0.56"	0.96" (HEX)	1-3/8"	832	3328	3500
MI-050S	1/2"	0.63"	1.13" (HEX)	1-7/16"	1355	5422	5000
MI-050L	1/2"	0.75"	1.44" (HEX)	2-3/4"	1829	7318	5000
MI-063S	5/8"	0.88"	1.38" (HEX)	1-5/8"	1377	5508	5000
MI-063L	5/8"	0.88"	1.63" (HEX)	2-7/8"	2739	10956	5000
MI-075S	3/4"	0.94"	1.38" (HEX)	1-5/8"	1398	5595	5000
MI-075L	3/4"	1.00"	1.88" (HEX)	3"	2232	8929	5000

NOTE: - USE NATIONAL COARSE THREAD BOLTS  
- THREADS MUST BE FULLY ENGAGED TO ACHIEVE LOADS LISTED ABOVE  
- GRADE 8 BOLTS ARE TO BE USED FOR MAXIMUM PERFORMANCE



EXAMPLE OF HEXAGONAL BASE

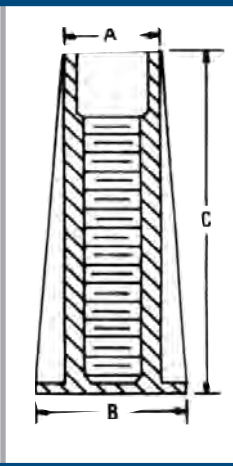
# Plastic Inserts

## Installation Instructions

Plastic inserts are amazingly strong, easy to use, and very inexpensive. Precasters have been using them for over thirty years during which they have built a reputation for durability, reliability, and effectiveness. Plastic inserts won't corrode or leave unsightly marks on concrete.

### TEST RESULTS & DIMENSIONS

Part No.	Bolt Dia.	Thread N.C.	A	B	C	Working Load (lbs.)	Ultimate Strength
IN-025	1/4"	20	.35"	.75"	1 1/4"	140	700
IN-038	3/8"	16	5/8"	7/8"	1 1/2"	220	1100
*IN-050	1/2"	13	.70"	1"	2 1/2"	1640	8,200
*IN-050 S	1/2"	13	.70"	1"	1 3/4"	1640	8,200
IN-063	5/8"	11	13/16"	1 5/16"	3"	3360	16,800
IN-075	3/4"	10	15/16"	1 3/8"	3 1/4"	3500	17,600
IN-100	1"	8	1 3/16"	1 13/16"	3 3/4"	3740	18,700
IN-150	1 1/2"	Coil	1 7/8"	2 1/4"	5 1/4"	4560	22,800



The following tests were made using a 4000 psi mix. Inserts have been tested both in tension and in shear.

*\* Also available in reinforced grades for greater torque strength.*

**EASY TO USE** Pennsylvania Insert's thermoplastic inserts install quickly and easily, especially when used in conjunction with Tap-Ons. Additionally, PA Inserts are made from a self lubricating plastic which makes threading easy.

**RELIABLE** They have high mechanical strength properties and great chemical resistance. Corrosion is not going to compromise the effectiveness of these inserts.

**DURABLE** Plastic inserts are fatigue resistant and will not be effected by vibration.

**MANY SIZES** Inserts are available in thread sizes from 1/4" to 1-1/2" and all sizes are stocked for quick shipment.

### USEFUL TIPS:

- Bolt must be fully threaded into insert.
- Use high strength bolts for best results.
- Use Tap-Ons or Stick-Ons for installing inserts to save drilling holes in expensive steel forms.

PA Insert Corp. Makes no warranty that the thermoplastic insert described herein is merchantable or fit for any particular purpose, and there are no warranties, express or implied, which extend beyond the description of the thermoplastic insert set forth herein. Please contact PA Insert for information and uses. Not recommended where temperatures exceed 185 degrees F. (this does not apply to steam curing) The purchaser acknowledges that PA Insert Corp. has no control over the installation or use of its products. Accordingly, PA Insert cannot assume responsibility for any damage to any property arising out of the improper use or installation of its products. PA Insert products are intended for use by trained, qualified, and experienced workers only. Misuse or lack of supervision & inspection can result in serious injury or death. All applications should be carefully field tested, safe working loads determined based on conditions, and all safety regulations followed.

