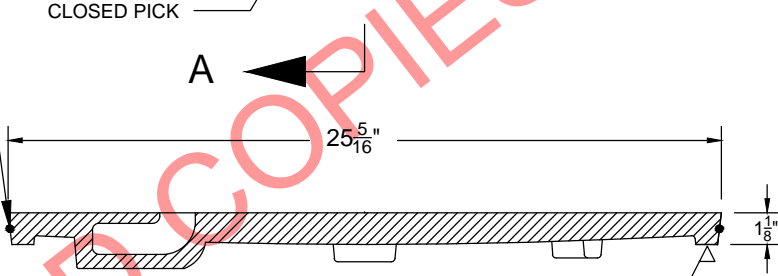


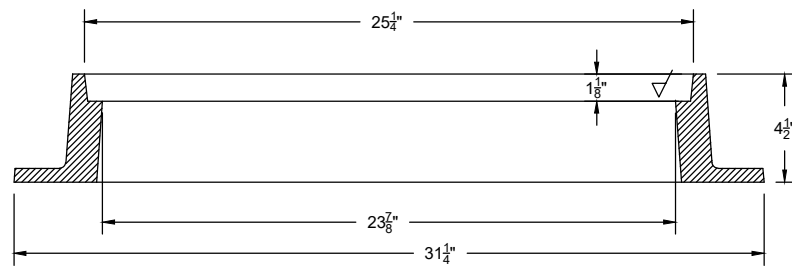
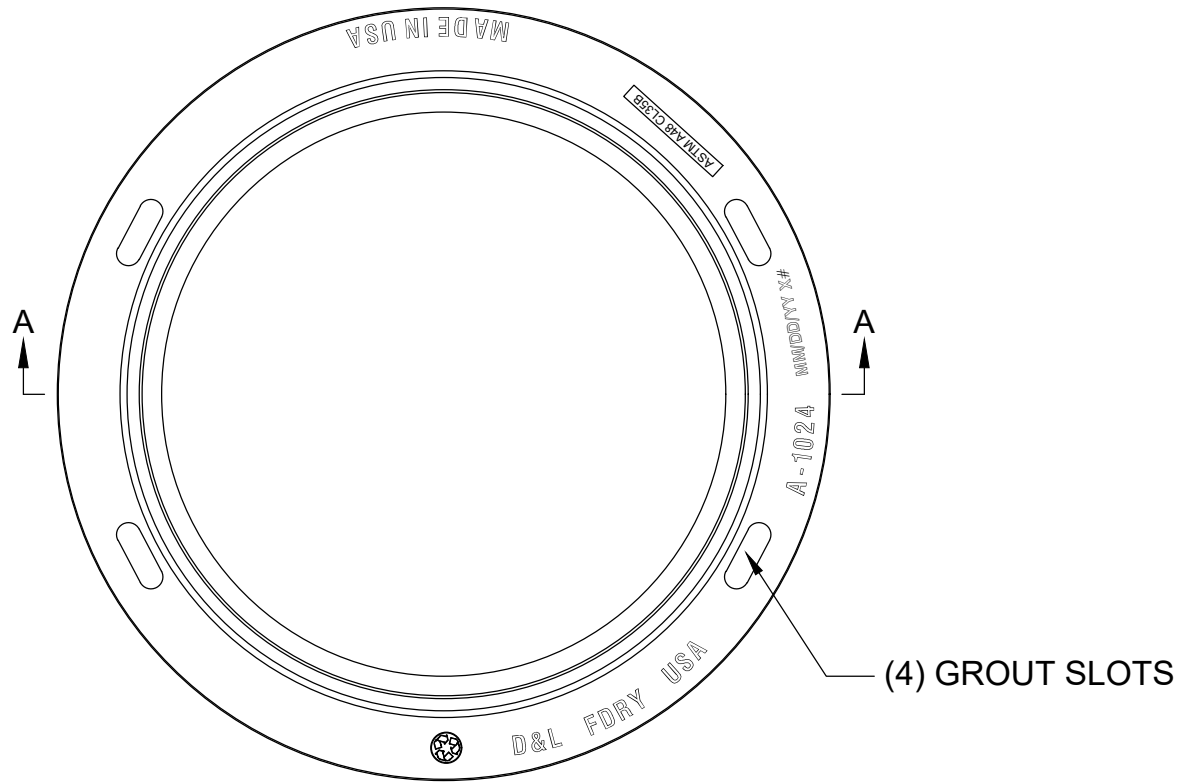


1/4" O-RING



SECTION A-A

	<b>D&amp;L Foundry, Inc.</b> <b>"The Iron Men"</b> MADE IN THE USA	<b>PART NUMBER</b>  <b>A-1024-S46</b>	<b>DATE</b> 06/21/16	<b>DESCRIPTION</b> PART UPDATED WITH DRAWING	<b>DRAWN</b> RMH	<b>APPROVED</b> RG	GRAY IRON CONFORMS TO ASTM A48 CL35B	<b>REFERENCE INFORMATION</b>  CATALOG NUMBERS COVER RING COPE: - 1110 COPE: - XXXX DRAG: - 1004 DRAG: - XXXX	<b>DESIGN REVIEW</b> SALES / / PATTERN / / PROD. / / POST. / / OTHER / /
	<small>THE INFORMATION CONTAINED IN THIS DRAWING IS THE SOLE PROPERTY OF D&amp;L FOUNDRY. ANY REPRODUCTION IN PART OR AS A WHOLE WITHOUT THE WRITTEN PERMISSION OF D&amp;L FOUNDRY IS PROHIBITED</small>	<small>ALL TOLERANCES ARE +/- 1/16" PER FOOT, MEASUREMENTS LESS THAN ONE FOOT ARE +/- 1/32" UNLESS OTHERWISE SPECIFIED</small>	 DESIGNATES MACHINED SURFACE						



SECTION A-A



D&L Foundry, Inc.  
"The Iron Men"  
MADE IN THE USA

THE INFORMATION CONTAINED IN THIS DRAWING IS THE SOLE PROPERTY OF D&L FOUNDRY. ANY REPRODUCTION IN PART OR AS A WHOLE WITHOUT THE WRITTEN PERMISSION OF D&L FOUNDRY IS PROHIBITED

PART NUMBER  
**A-1024-R2**

DATE	DESCRIPTION	DRAWN	APPROVED
11/06/13	DRAWING PLACED IN NEW TEMPLATE	E.K.	
05/22/15	TEMPLATE AND MARKINGS UPDATED	E.K.	M.C.
02/22/16	REVISED C.O. TO 23.5" ECR 197	C.H.	
06/15/18	DIMENSION UPDATE	RKB	R.B.

GRAY IRON  
CONFORMS TO  
ASTM A48 CL35B

ALL TOLERANCES ARE +/- 1/32" PER FOOT, MEASUREMENTS LESS THAN ONE FOOT ARE +/- 1/16" UNLESS OTHERWISE SPECIFIED

REFERENCE INFORMATION	DESIGN REVIEW	/	/
CATALOG NUMBERS	SALES		N/A
COVER RING	PATTERN		N/A
COPE: - XXXX COPE: - 7307	PROD.		N/A
DRAG: - XXXX DRAG: - 7306	POST.		N/A
✓ DESIGNATES MACHINED SURFACE	OTHER		N/A