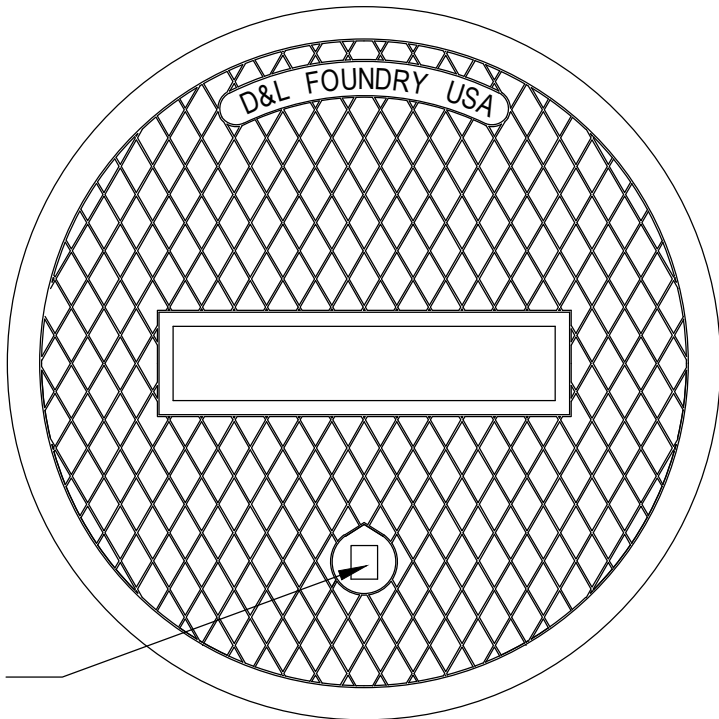
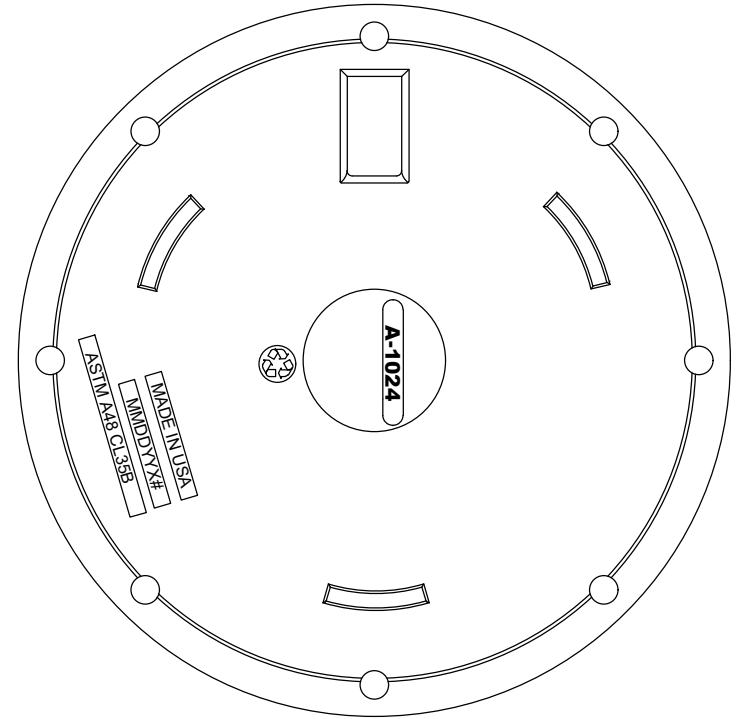


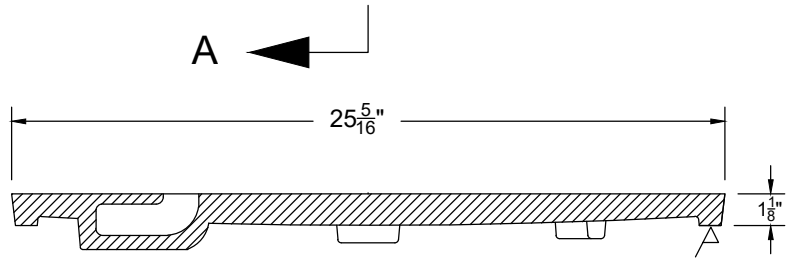
A



CLOSED PICK



A



SECTION A-A



D&L Foundry, Inc.
"The Iron Men"
 MADE IN THE USA
 THE INFORMATION CONTAINED IN THIS DRAWING IS THE SOLE PROPERTY OF D&L FOUNDRY. ANY REPRODUCTION IN PART OR AS A WHOLE WITHOUT THE WRITTEN PERMISSION OF D&L FOUNDRY IS PROHIBITED

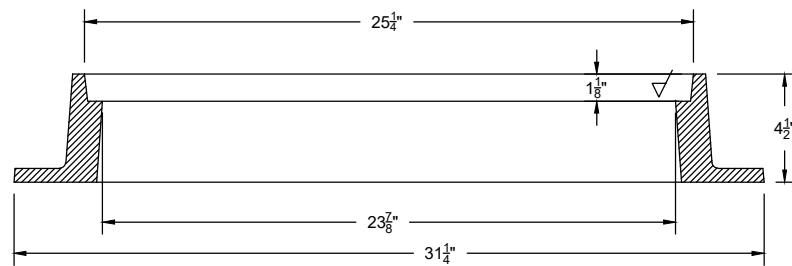
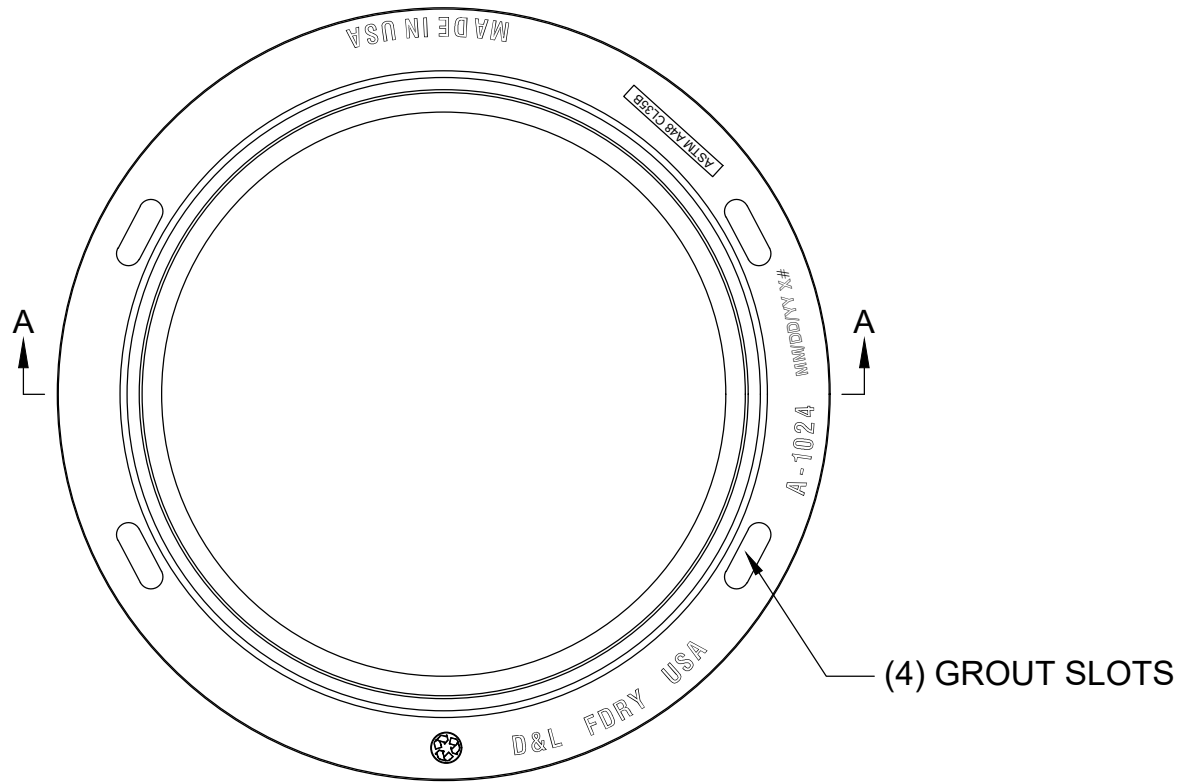
PART NUMBER
A-1024-46

DATE	DESCRIPTION	DRAWN	APPROVED
06/16/16	PART UPDATED WITH DRAWING	RMH	RG
02/22/18	DRAWING UPDATE	D.C.	

GRAY IRON
 CONFORMS TO
 ASTM A48 CL35B
 ALL TOLERANCES ARE +/- 1/16" PER
 FOOT, MEASUREMENTS LESS THAN
 ONE FOOT ARE +/- 1/16"
 UNLESS OTHERWISE SPECIFIED

REFERENCE INFORMATION	
CATALOG NUMBERS	
COVER	RING
COPE: - 1110	COPE: - XXXX
DRAG: - 1004	DRAG: - XXXX
DESIGNATES MACHINED SURFACE	

DESIGN REVIEW		/	/
SALES			N/A
PATTERN			N/A
PROD.			N/A
POST.			N/A
OTHER			N/A



SECTION A-A



D&L Foundry, Inc.
"The Iron Men"
 MADE IN THE USA

THE INFORMATION CONTAINED IN THIS DRAWING IS THE SOLE PROPERTY OF D&L FOUNDRY. ANY REPRODUCTION IN PART OR AS A WHOLE WITHOUT THE WRITTEN PERMISSION OF D&L FOUNDRY IS PROHIBITED

PART NUMBER
A-1024-R2

DATE	DESCRIPTION	DRAWN	APPROVED
11/06/13	DRAWING PLACED IN NEW TEMPLATE	E.K.	
05/22/15	TEMPLATE AND MARKINGS UPDATED	E.K.	M.C.
02/22/16	REVISED C.O. TO 23.5" ECR 197	C.H.	
06/15/18	DIMENSION UPDATE	RKB	R.B.

GRAY IRON
 CONFORMS TO
 ASTM A48 CL35B

ALL TOLERANCES ARE +/- 1/16" PER FOOT, MEASUREMENTS LESS THAN ONE FOOT ARE +/- 1/16" UNLESS OTHERWISE SPECIFIED

REFERENCE INFORMATION	DESIGN REVIEW	/	/
CATALOG NUMBERS	SALES		N/A
COVER RING	PATTERN		N/A
COPE: - XXXX COPE: - 7307	PROD.		N/A
DRAG: - XXXX DRAG: - 7306	POST.		N/A
✓ DESIGNATES MACHINED SURFACE	OTHER		N/A