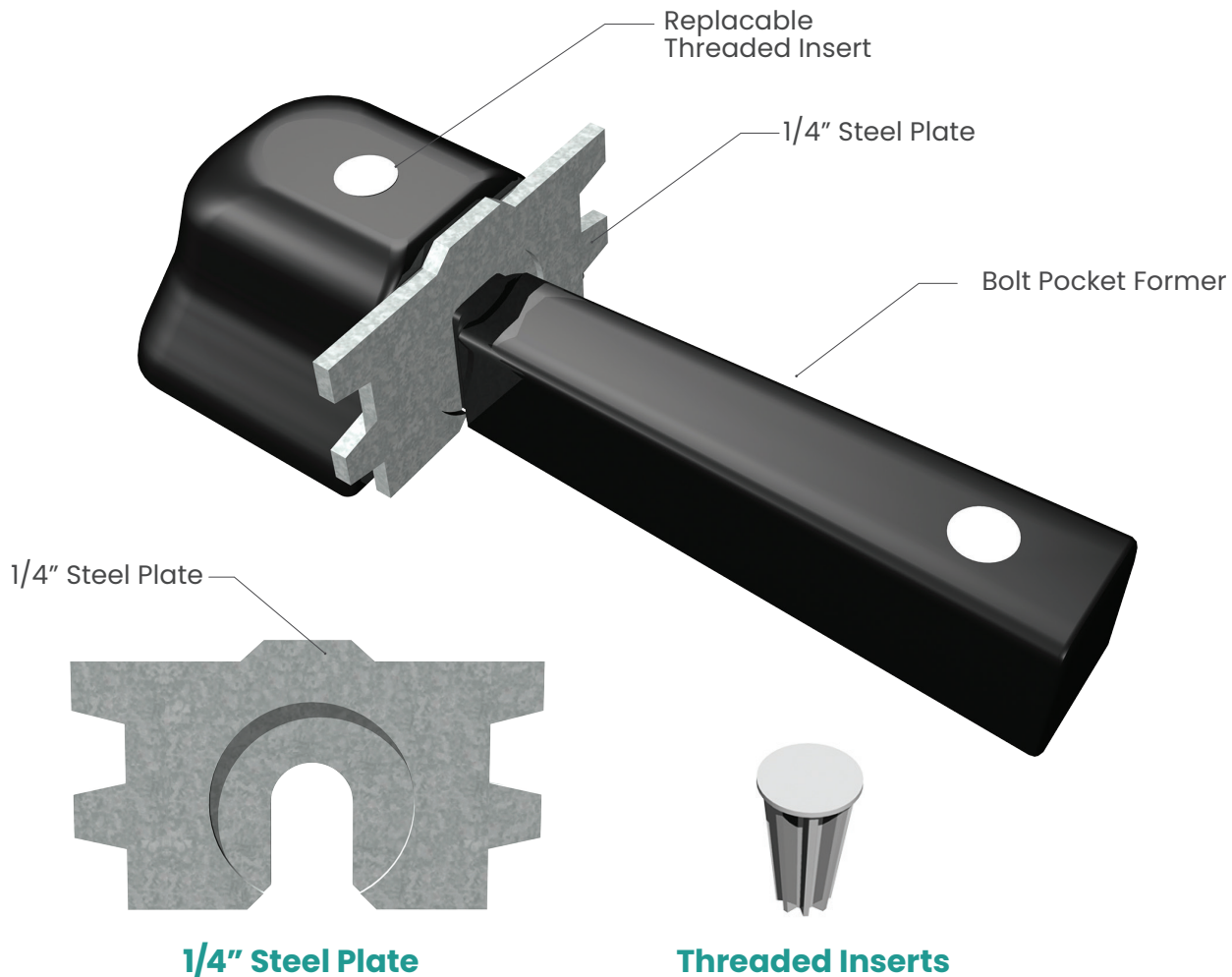


## Precast Concrete Bolt Pocket Former

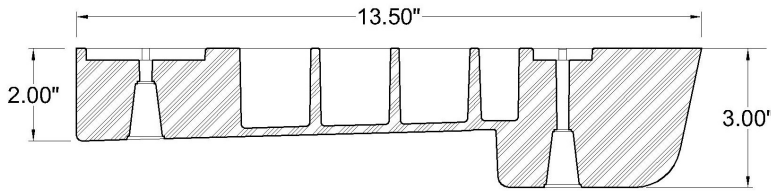
Bolt Pocket Former – the ideal solution for tying together sections of box culvert or precast walls. This dual purpose forming device creates both a groove through the joint and a pocket for the bolt. The steel plate that remains embedded in the concrete accepts up to 1" rod. Molded out of a specially formulated durable thermoplastic, our bolt pocket former will last for at least 50 pours when properly maintained.



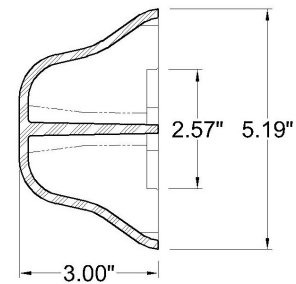
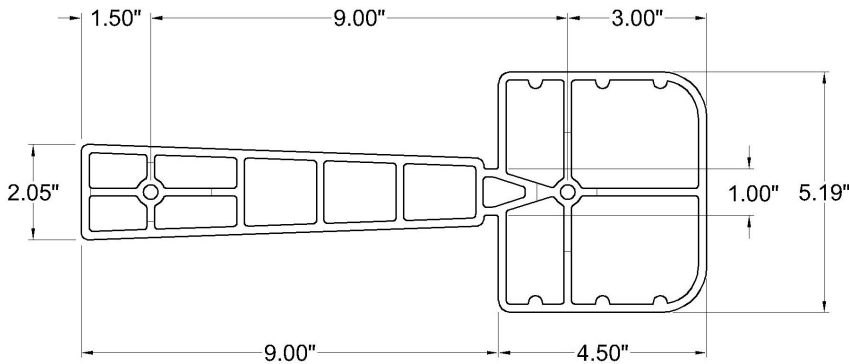
### Features

- Threaded Inserts are quickly and easily replaceable.
- Steel Plate remains in concrete to hold nut and distribute load.
- Attach to form using either 1/4" bolt or plastic screws.
- Attachment magnets available for quickly securing to form.

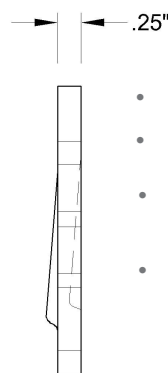
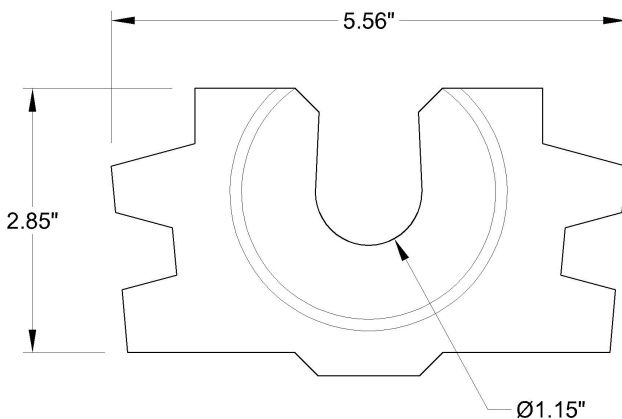
### Bolt Pocket Former (for up to 1" bolt)



- Made from a durable thermoplastic for reusability.
- Ribbed construction increases strength.
- \* Available with magnets, screws and 1/4" inserts to attach to form.  
(Kit sold separately, Part # 5208)
- \*\*1/4" Galvanized Steel Plate Standard.  
(Sold separately, Part # 4024)



### Bolt Pocket Plate (use with bolt pocket former)



- Teeth anchor plate securely in concrete.
- Pressed center keeps bolt in position.
- \*1/4" Galvanized Steel Plate Standard. (Plain Steel and Stainless Steel optional)
- \* Fits securely into reusable bolt pocket former.  
(Sold separately, Part # 4024)

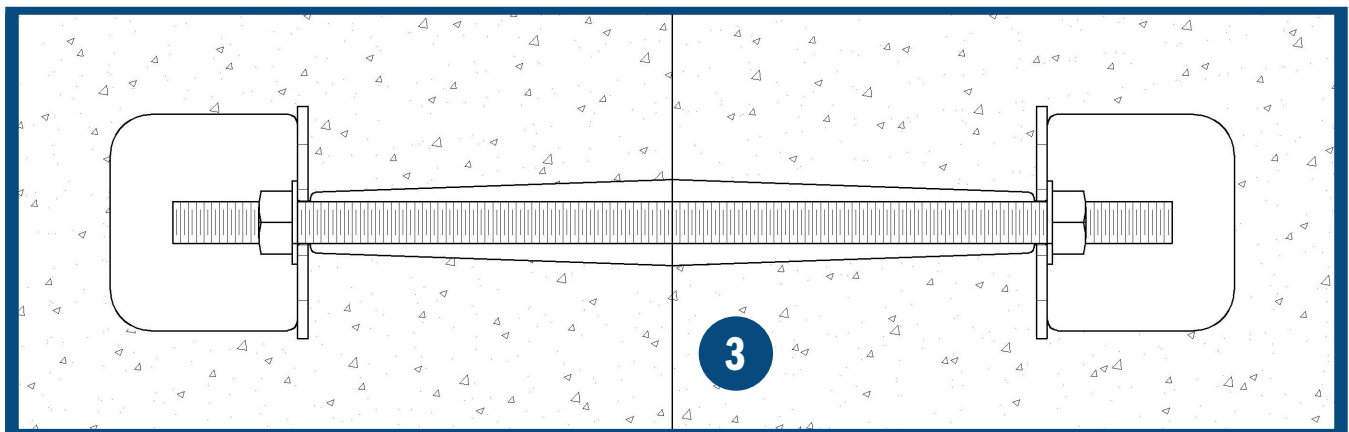
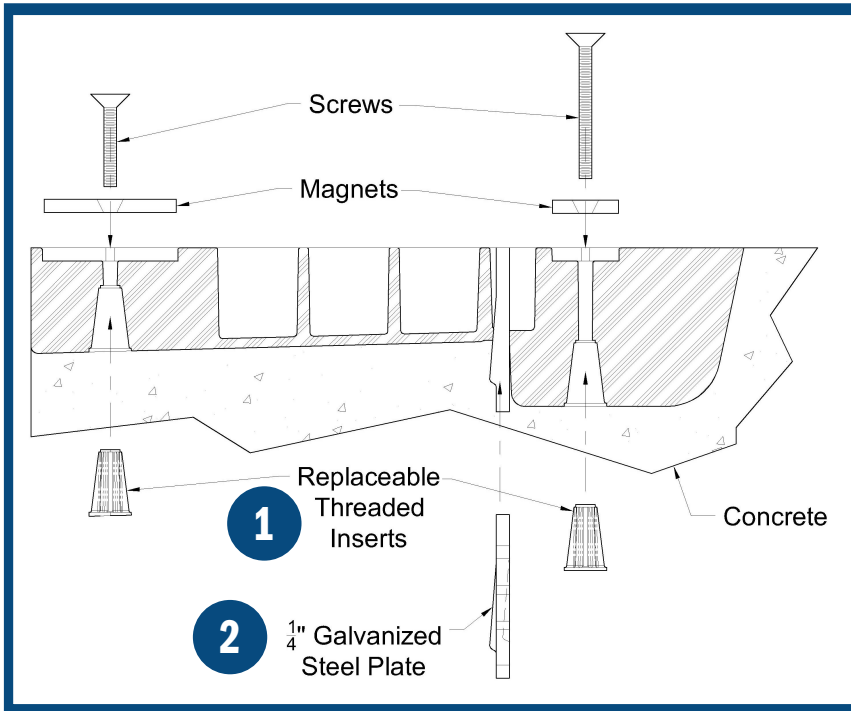
### Installation Instructions



- 1 Steel Plate remains embedded in concrete to hold nut.
- 2 Attach to form using either 1/4" bolts or plastic screws. Version with magnets available.

**Bolt Pocket Former** - the ideal solution for tying together sections of box culvert or precast walls. This dual purpose forming device creates both a groove through the joint and a pocket for the bolt. The steel plate that remains embedded in the concrete accepts up to a 1" rod. Molded out of a specially formulated durable thermoplastic, our bolt pocket former will last for at least 50 pours when properly maintained.

### Installation Instructions



3

After stripping form, slide Bolt Pocket Former out using pliers. Steel plate remains embedded in concrete. A groove through the joint and bolt pocket are formed. For field installation\*, the steel plate accepts up to 1" rod. \*We provide a field installation kit consisting of rod, 2 nuts, and 2 washers for an additional charge. Zinc Plated Kit - Part # 4026, 304 Stainless Steel Kit - Part # 4388