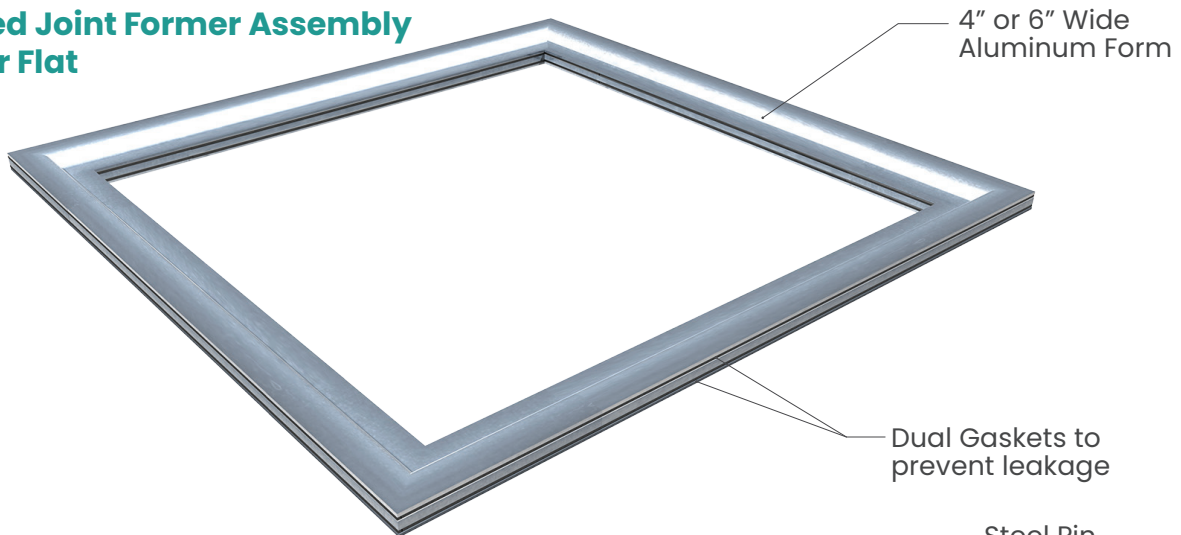


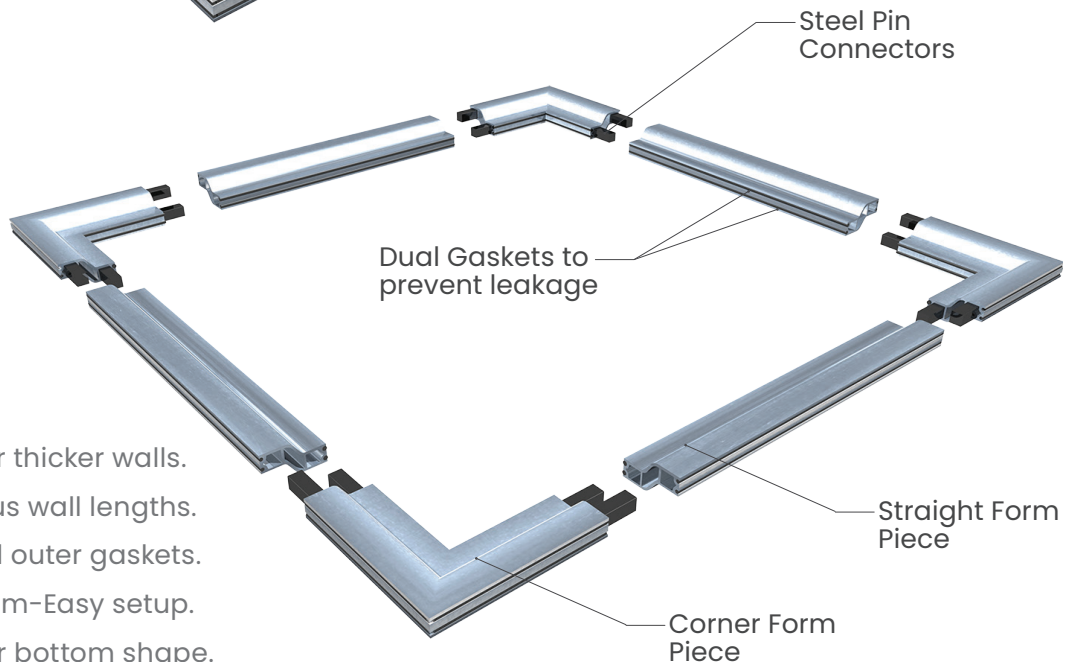
Precast Concrete Joint Former System

Pennsylvania Insert's patented expandable joint former system for flat or shiplap joints is a modular, light-weight system with unprecedented versatility. The joint former system includes both Header and Pallet forming components with dual gaskets, and is designed to create a perfect joint, eliminating leakage and field repairs. Each form piece is made of lightweight aluminum, making the joint former system easy to set up manually which eliminates the time spent waiting for a crane. The Expansion Mate accessory allows the same pallet former to be used for wall thicknesses from 4" to 12".

Completed Joint Former Assembly Shiplap or Flat



Pallet Former Pieces



Features

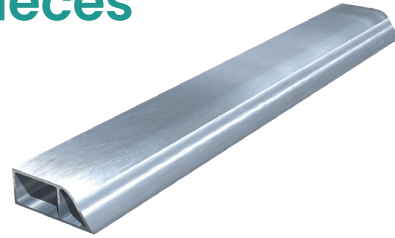
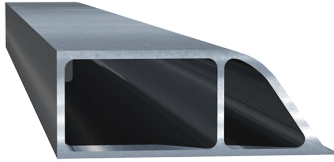
- 1" Form extenders for thicker walls.
- Adjustable for various wall lengths.
- Leak proof inner and outer gaskets.
- Lightweight aluminum-Easy setup.
- Reversible-For top or bottom shape.
- Easy assembly steel pin connectors.
- Ideal fo Shiplap or Flat joints.

Please Call Us for a Quote

Palninsert.com | 800-220-4857

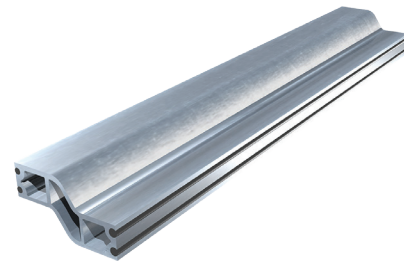
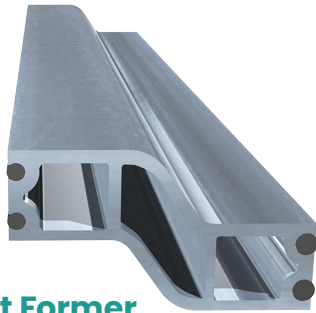
CONCRETE VAULT JOINT PALLET FORMER SYSTEM

Precast Concrete Joint Former Pieces



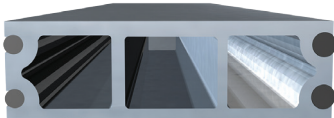
Header/Base Former

Ideal for creating nesting joints for concrete vault top slab lids, or concrete vault slab bottoms. Form pieces are cut to fit specific vault length. Header/Base former corners complete the assembly.



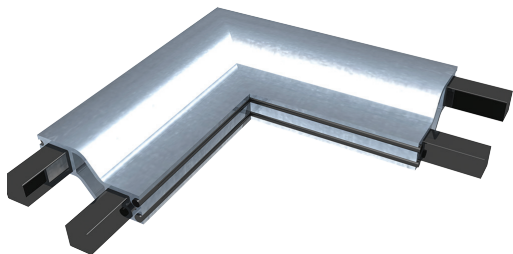
Shiplap Pallet Former

Ideal for creating nesting shiplap joints for concrete vault wall and riser sections. Form pieces are cut to fit specific vault lengths. Shiplap pallet former corners complete the former assembly.

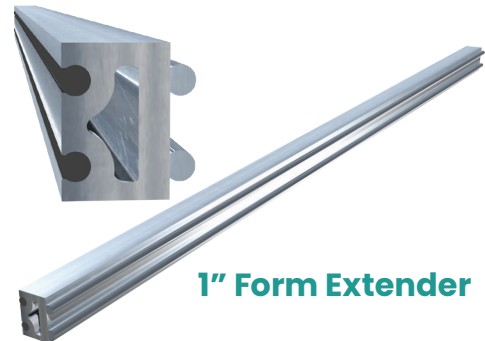


Flat Pallet Former

Ideal for creating stacked flat joints for concrete vault wall and riser sections. Form pieces are cut to fit specific vault lengths. Flat pallet former corners complete the former assembly.



Pallet Corner Formers – Shiplap or Flat

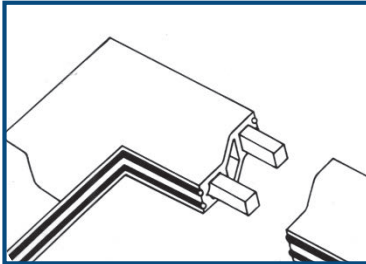


1" Form Extender

Please Call Us for a Quote

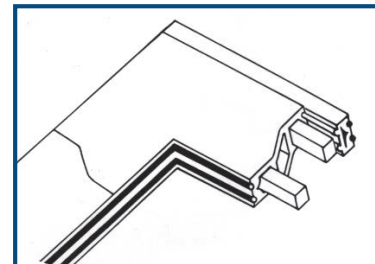
Palninsert.com | 800-220-4857

Installation Instructions



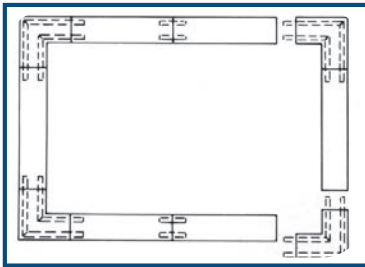
1

Aluminum Shiplap Pallet material can be assembled by joining four corners with straight lengths to form the desired size pallet.



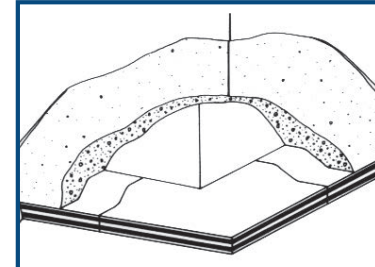
2

One inch extension pieces can be added for walls thicker than six inches.



3

Slide the straight lengths over the steel pins that form part of each corner, then press in the gasket material to fill any gaps.



4

Once the first half is poured, simply flip the pallet over to make the joining piece.

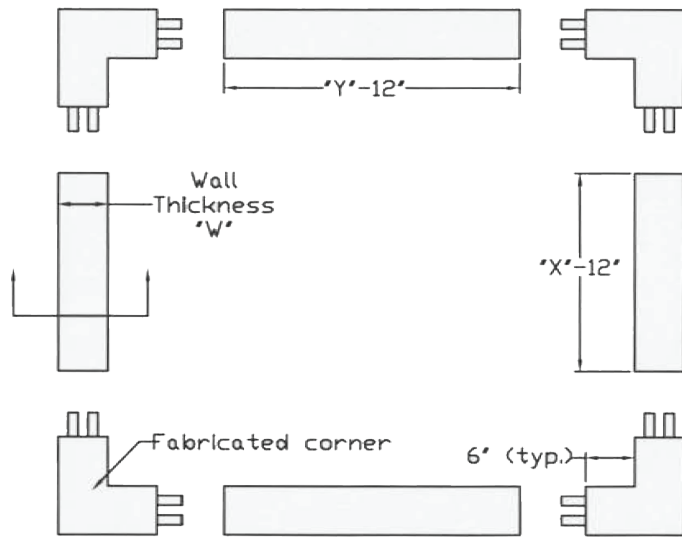
SAVE MONEY Pennsylvania Insert's patented expandable shiplap pallet system is a modular, light weight, shiplap joint former with unprecedented versatility. It makes a perfect joint eliminating leakage and field repairs which saves money. Best of all, your customers are going to be happy because the product is going to look great.

EASY TO USE Because it is aluminum it weighs less than a steel pallet. It can be set up manually which eliminates the time spent waiting for a crane.

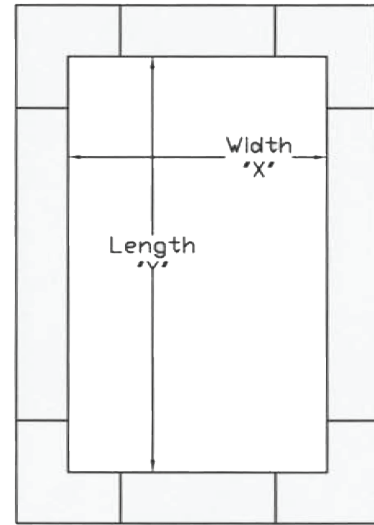
VERSATILE Modular, it can be used on lots of different forms. The Expansion Mate accessory allows the same pallet to be used for wall thicknesses from 4" to 12". Because it can be used in so many ways and many times, it will generate amazing savings in lumber.

PRO TIP

It is recommended that the edge former be shimmed every several feet to prevent twisting.



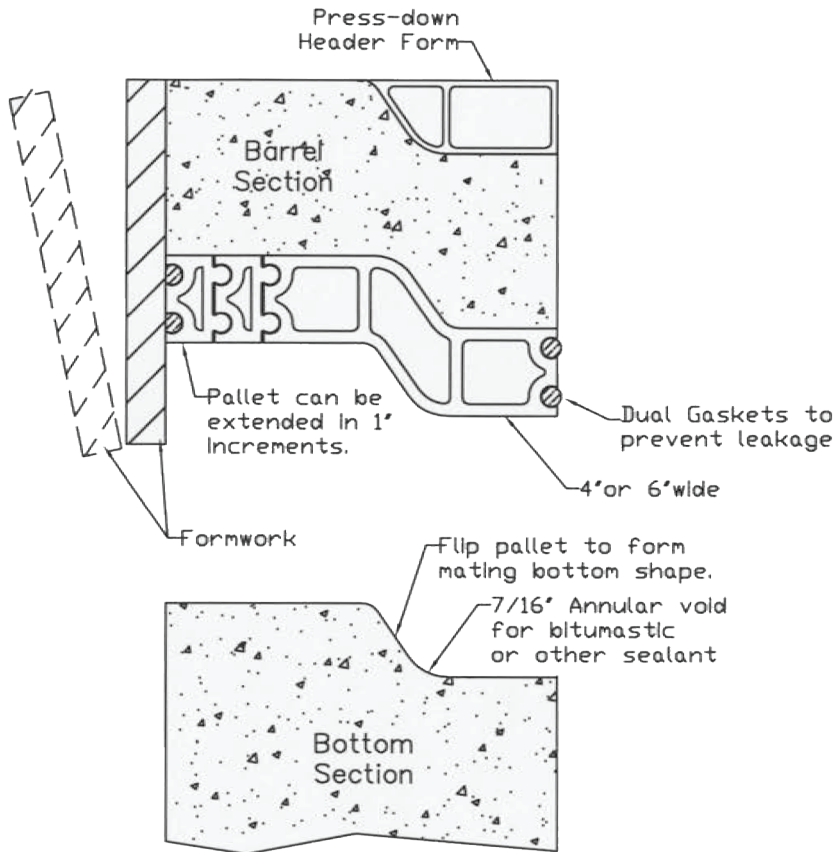
Plan-Form Pieces



Plan-Assembled Form



Please Call Us for a Quote



Section

FOR PRE-ASSEMBLED PALLETS, PLEASE SPECIFY	
X	
Y	
W	
Header?	Y/N

FOR PARTS ONLY, PLEASE SPECIFY	
4' Pallet	ft.
6' Pallet	ft.
1' Ext.	ft.
Header	ft.
Gasket	ft.
Corners	ea.