

Attention: \_\_\_\_\_

From: \_\_\_\_\_

Fax #: \_\_\_\_\_

PA Insert Quote or Job Number: \_\_\_\_\_

Customer: \_\_\_\_\_

Project: \_\_\_\_\_

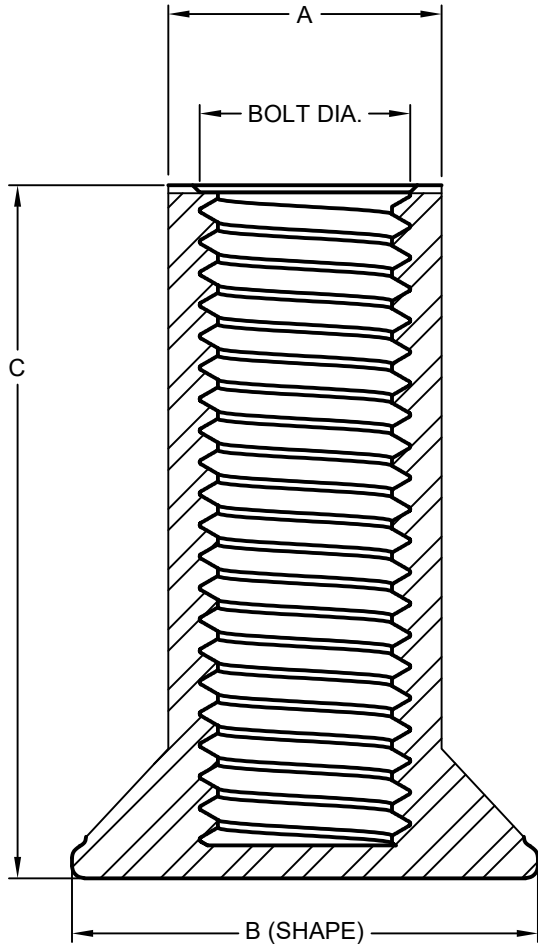
Job Number: \_\_\_\_\_

Ship Date: \_\_\_ / \_\_\_ / \_\_\_

Date: \_\_\_ / \_\_\_ / \_\_\_

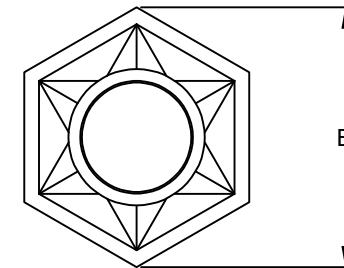
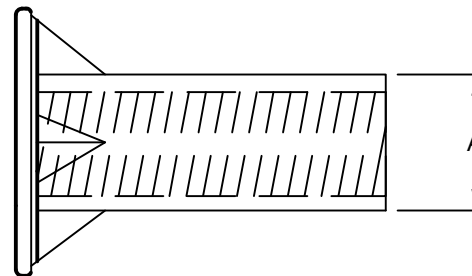
Page \_\_\_ of \_\_\_

## ZINC THREADED INSERTS



QTY.	PART NUMBER	BOLT DIA.	A	B	C	WORKING LOAD (LBS.)	ULTIMATE STRENGTH (LBS.)	PSI OF CONCRETE TESTED
	2893	3/8"	0.56"	0.96" (HEX)	1-3/8"	832	3328	3500
	2894	1/2"	0.63"	1.13" (HEX)	1-7/16"	1355	5422	5000
	3232	1/2"	0.75"	1.44" (HEX)	2-3/4"	1829	7318	5000
	5312	5/8"	0.88"	1.38" (HEX)	1-5/8"	1377	5508	5000
	3233	5/8"	0.88"	1.63" (HEX)	2-7/8"	2739	10956	5000
	3669	3/4"	0.94"	1.38" (HEX)	1-5/8"	1398	5595	5000
	2959	3/4"	1.00"	1.88" (HEX)	3"	2232	8929	5000

NOTE: - USE NATIONAL COARSE THREAD BOLTS  
 - THREADS MUST BE FULLY ENGAGED TO ACHIEVE LOADS LISTED ABOVE  
 - GRADE 8 BOLTS ARE TO BE USED FOR MAXIMUM PERFORMANCE  
 - USA MADE



EXAMPLE OF HEXAGONAL BASE

NO SCALE