

Attention: _____

From: _____

Fax #: _____

PA Insert Quote or Job Number: _____

Customer: _____

Project: _____

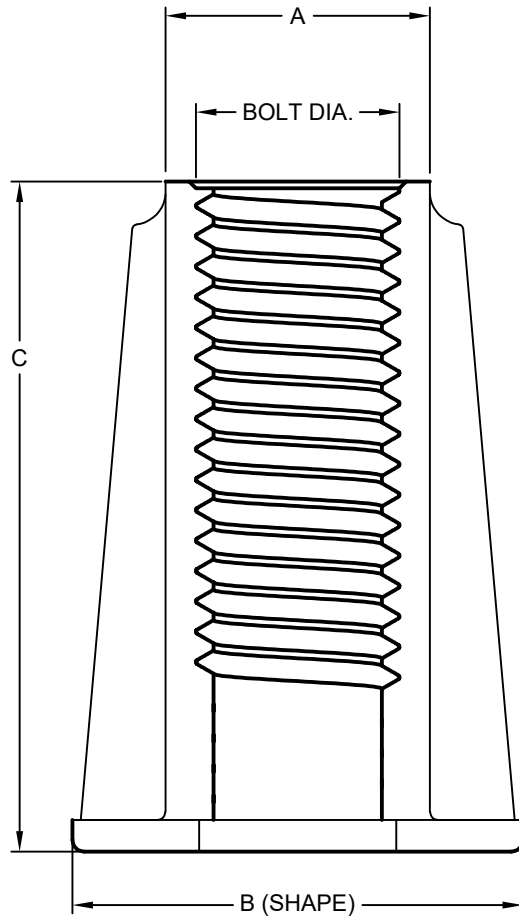
Job Number: _____

Ship Date: ____ / ____ / ____

Date: ____ / ____ / ____

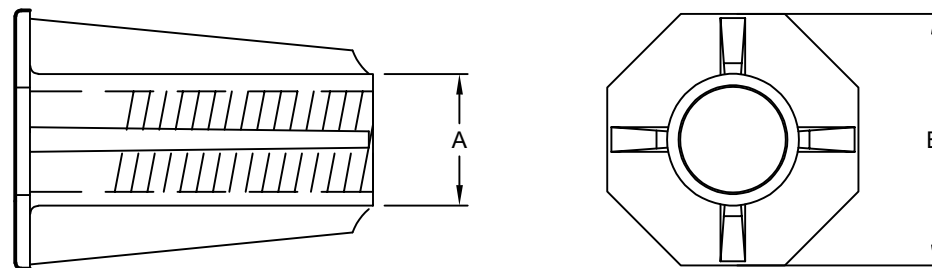
Page ____ of ____

ZINC THREADED INSERT



QTY.	PART NUMBER	BOLT DIA.	A	B	C	WORKING LOAD (LBS.)	ULTIMATE STRENGTH (LBS.)
	10113	3/8"	0.56"	0.87" (HEX)	1-3/8"	832	3328
	10114	1/2"	0.63"	1.25" (OCT)	1-1/2"	1355	5422
	10117	1/2"	0.71"	1.38" (OCT)	2-15/16"	1829	7318
	10115	5/8"	0.80"	1.38" (OCT)	1-11/16"	1377	5508
	10116	3/4"	0.92"	1.56" (OCT)	1-11/16"	1398	5595
	10118	3/4"	0.92"	1.56" (OCT)	2-7/8"	2232	8929

- NOTE: - IMPORTED
 - USE NATIONAL COARSE THREAD BOLTS
 - THREADS MUST BE FULLY ENGAGED TO ACHIEVE LOADS LISTED ABOVE
 - GRADE 8 BOLTS ARE TO BE USED FOR MAXIMUM PERFORMANCE
 - IMPORTED INSERT LOADS ARE NOT TESTED. WORKING LOADS AND ULTIMATE STRENGTH ARE ESTIMATES BASED ON INDUSTRY STANDARDS.



EXAMPLE OF OCTOGONAL BASE

NO SCALE